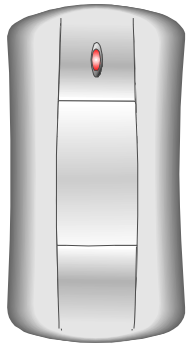


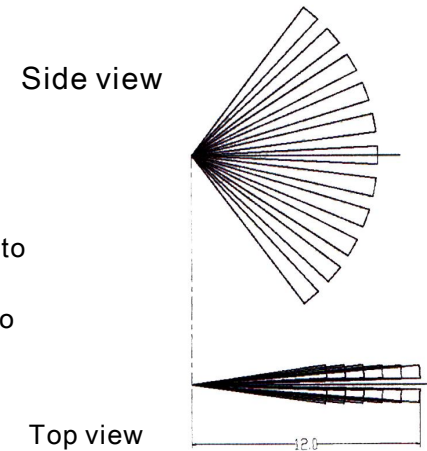
Wired Curtain DetectorAL-416Y



Main Features:
 Pyroelectric infrared technology
 Microprocessor design
 Pet immunity
 High immunity for false alarm
 Automatic temperature compensation

technology Parameter:
 Working voltage: 9-16VDC
 Working Current: Less than 14mA
 Arming Current: Less than 9mA
 Light Filter: White light protection,
 color filter
 Passive infrared detector
 testing draw (Draw 1)
 Sensor: Dual infrared + fuzzy logical
 struction

Detecting Angle: Center on the
 detectotr,
 detecting sector:
 horizontal: 100degree,
 Vertical: 10degree
 Detecting Distance: 5-10M
 Dimension: 108*62*47.5MM
 Working Temperature: -10 degree to
 40 degree
 Storage Temperature: -25 degree to
 65 degree
 EMI immunity: More than 1V/M
 White light immunity: More
 than 6500LUX



Draw 1

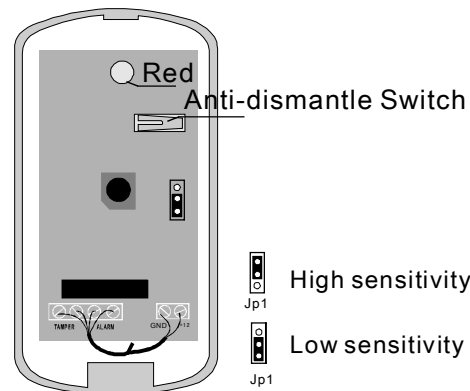
2. Attention:

It's better install the detector in the district that intruder has to come across.

1. Installation height (Normal in stallation): 2.1 to 2.7M, Suggestion installing height is 2.1M (Draw 6).
2. Detecting distriction should not toward the door and windows.
3. Keep away from the heat, the air-condition blowing area and air strong convective place (Or close the windows when armed)
4. There should not be barrier, float or something could be easily wafted such as flowers and plants, the colthes, curtain and so on.
5. Do not put the detector under the sun or the heat.

3. Instruction of Indicate LED light (Draw 2)

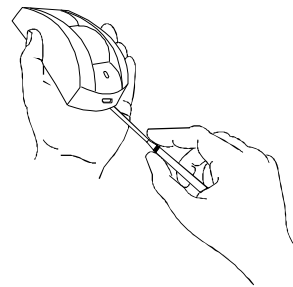
The Red Indicate LED light will flash for 2 sec., when the detector detected the motion.



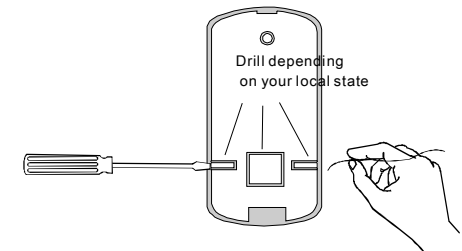
Draw 2

4. Prepare to install

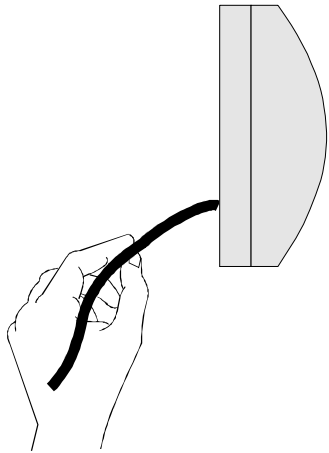
1. Open the cover (Draw 3)
2. Drill the connecting line position (Draw 4)
3. Connect the line to the detector (Draw 5)
4. Finally, fix the detector on the wall or ceiling. (Draw 6)



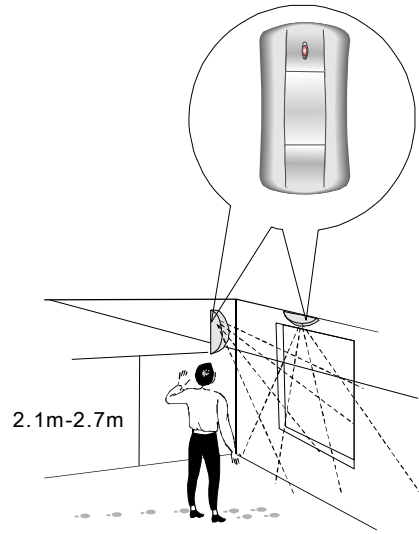
Draw 3



Draw 4



(Draw 5)



(Draw 6)

5. Connect to the power
12VDC (Draw 7)

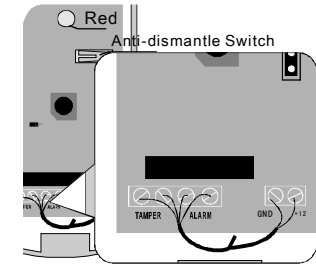
ALARM: Trigger arming
Arming type: Arming if it's being
cut off the loop

1. Two terminals is cut off, while
it's without power.
2. Two terminals will be connected,
while it's with power.
3. Two terminals will be cut off, while
it's being trigger.

TAMPER: Anti-dismantle Arming
Arming type: Arming if it's being cut
off the loop

1. Two terminals of TAMPER will
breakover, when Cover the cover.
If open the cover, two terminals
will be cut off.

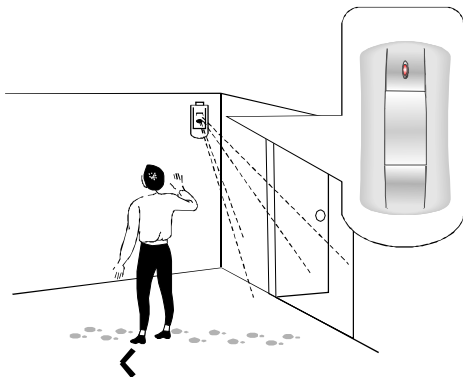
Drill position depending on the
Actual situation.



(Draw 7)

5. Detecting Test

While the power is on, wait for 2 minutes
until it's stable. Walk before the detecting
area to check the detecting distance. (Draw 8)



(Draw 8)