

VMS Lite (Video Management System Lite)

User Manual for Windows

Version:8.1.24.5

Catalog

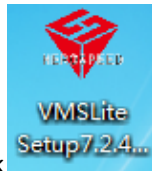
Catalog.....	II
1 Installation.....	1
1.1 Install VMS Lite.....	1
2 Use and operation instructions of VMS Lite.....	3
2.1 Management function usage and operation instructions.....	4
2.1.1 Login.....	5
2.1.2 Add hardware.....	6
2.1.2.1 Adding scanning equipment.....	6
2.1.2.2 Configuring automatic verification.....	7
2.1.2.3 Manual Verification hardware.....	9
2.1.2.3.1 IP address is added hardware.....	9
2.1.2.3.2 Add hardwareSerial Numbers.....	9
2.1.2.4 edit device properties.....	10
2.1.2.5 Remove equipment.....	10
2.1.3 Storage Configuration.....	11
2.1.3.1 Configure the storage path, stream type, retention time.....	12
2.1.3.2 configure the recording type, time change.....	13
2.1.3.3 Configuration Planned attribute.....	14
2.1.3.4 Configuration Template.....	15
2.1.4 User Management.....	16
2.1.4.1 Edit User Information.....	16
2.1.4.2 Edit User Information.....	17
2.1.4.3 Delete user.....	18
2.1.5 System parameter settings.....	19
2.1.5.1 Setting of basic parameters.....	19
2.1.5.2 SettingsAdministration options Settings.....	20
2.1.5.2.1 Setting of service state.....	20
2.1.5.2.2 Import the export client configuration.....	21
2.1.6 View Settings.....	21
2.1.6.1 View Editor.....	22
2.1.6.1.1 New View.....	22
2.1.6.1.2 view content editor.....	22
2.1.6.1.3 Modify the view name.....	25
2.1.6.1.4 Delete View.....	25
2.1.6.1.5 Set View polling.....	26
2.1.6.1.6 Save Edit.....	26

2.2 Operation function and description	27
2.2.1 Live Preview	27
2.2.1.1 Live Preview Features	28
2.2.1.2 View switching video	28
2.2.1.3 Select a camera preview video	29
2.2.1.4 PTZ control	29
2.2.1.5 Video Window Toolbar Function	30
2.2.1.6 View polling	31
2.2.1.7 Full Screen	31
2.2.2 Playback	32
2.2.2.1 Playback Interface Features	32
2.2.2.2 platform video playback	33
2.2.2.2.1 switch views video playback	33
2.2.2.2.2 The limiting choose camera video playback	33
2.2.2.2.3 Video Search	34
2.2.2.2.4 video playback	34
2.2.2.2.4.1 synchronous playback	34
2.2.2.2.4.2 independent playback	35
2.2.2.2.4.3 loop playback	36
2.2.2.3 Export Video Platform	36
2.2.2.4 Device Playback	39
2.2.2.4.1 Select playback video camera	40
2.2.2.4.2 Video Search	41
2.2.2.4.3 video playback	41
2.2.2.5 Export recording equipment	43
2.2.3 Electronic Map	44
2.2.3.1 Editing Electronic map	44
2.2.3.1.1 Edit Electronic map	45
2.2.3.1.2 Add camera elements	45
2.2.3.1.3 Add other elements	46
2.2.3.2 Preview Electronic map	47
2.2.4 Export List	48
3 Logout	49

1 Installation

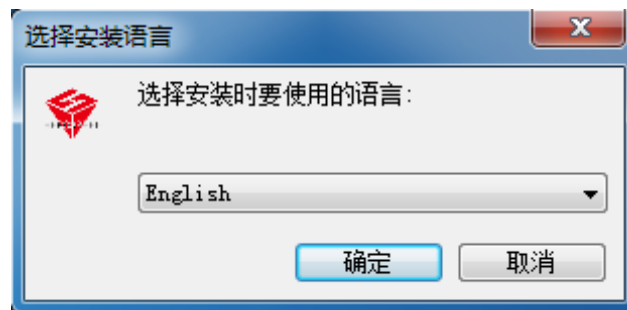
1.1 Install VMS Lite

You need to install the VMS Lite before using VMS Lite, The installation steps are as follows:

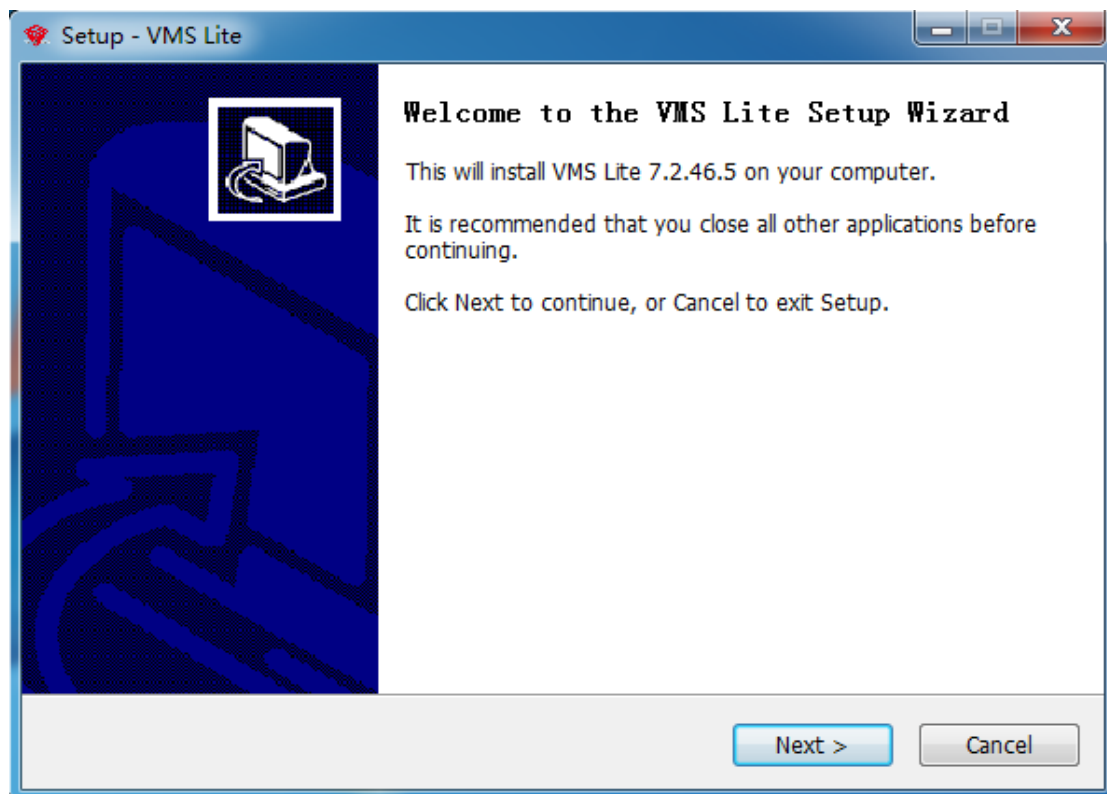


Step 1 Double-click

The system pops up the "select install language" dialog:

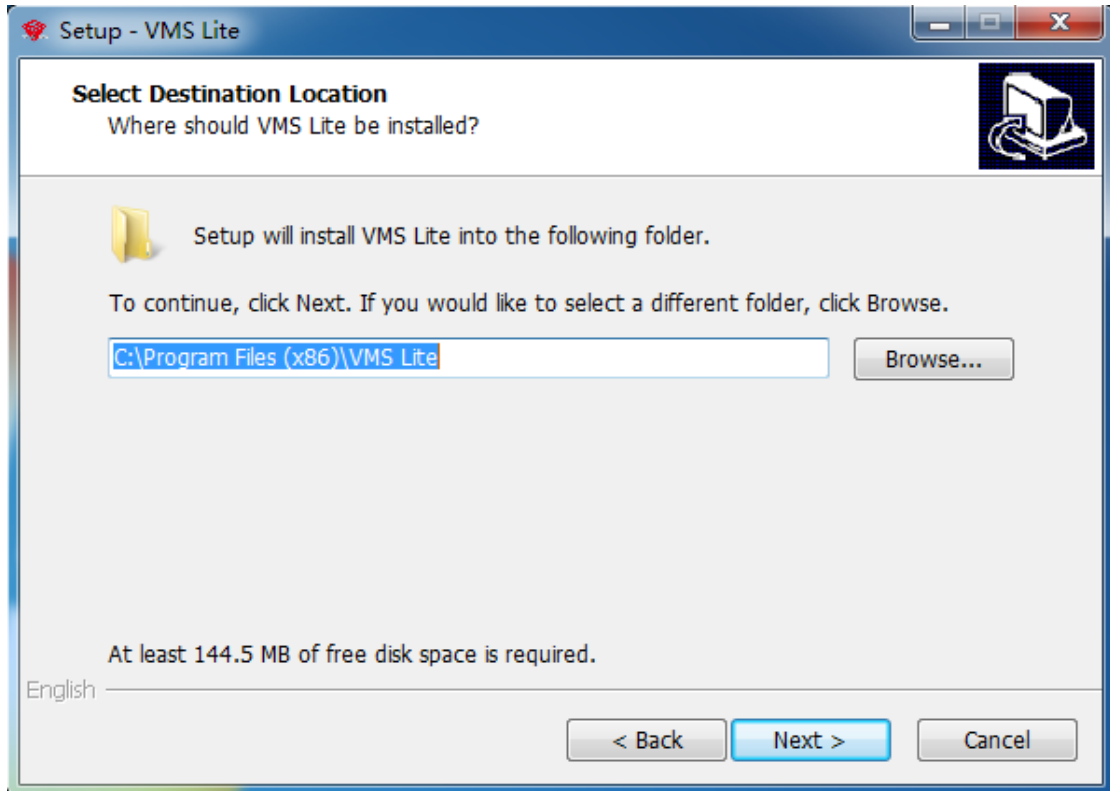


Step 2 Click the drop-down list box, select the installation language and click ok.
Pop-up "welcome install wizard" dialog.



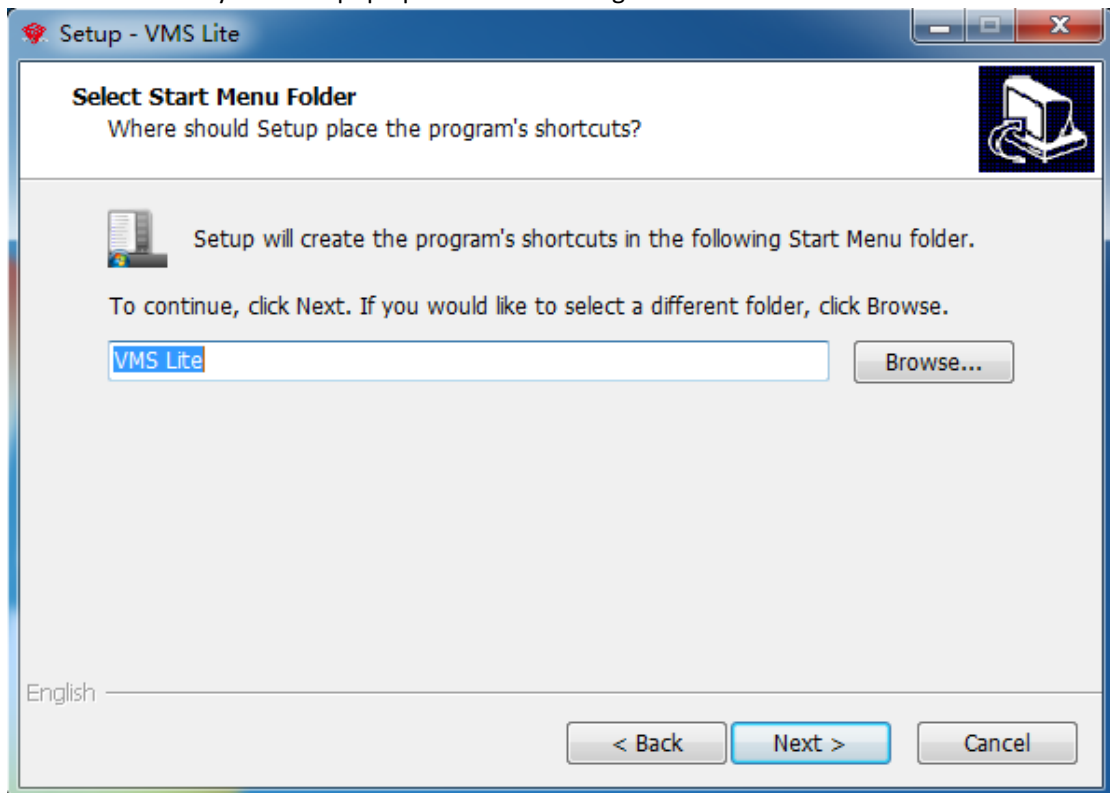
Step 3 Click "Next>".

The "installation path" dialog box will pop up, as shown below:



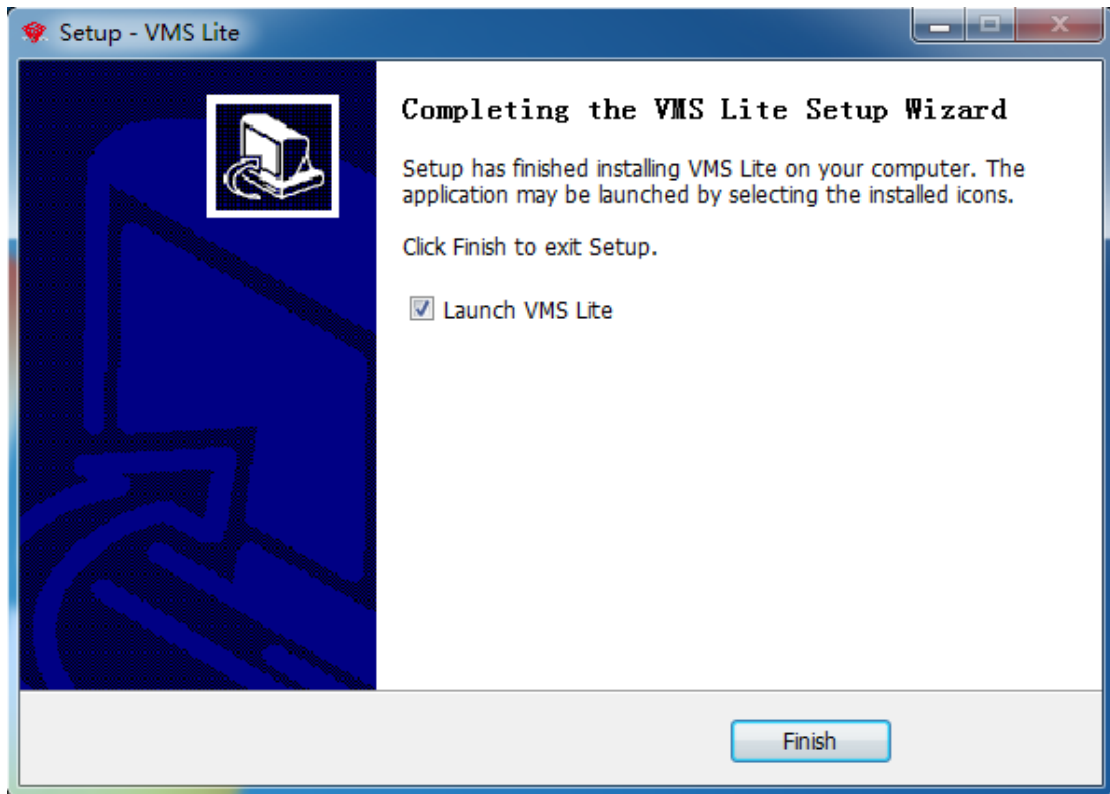
Step 4 Click "Next>".

The system will pop up the "attach dialog box".




Step 5 Click "Next>" to install.

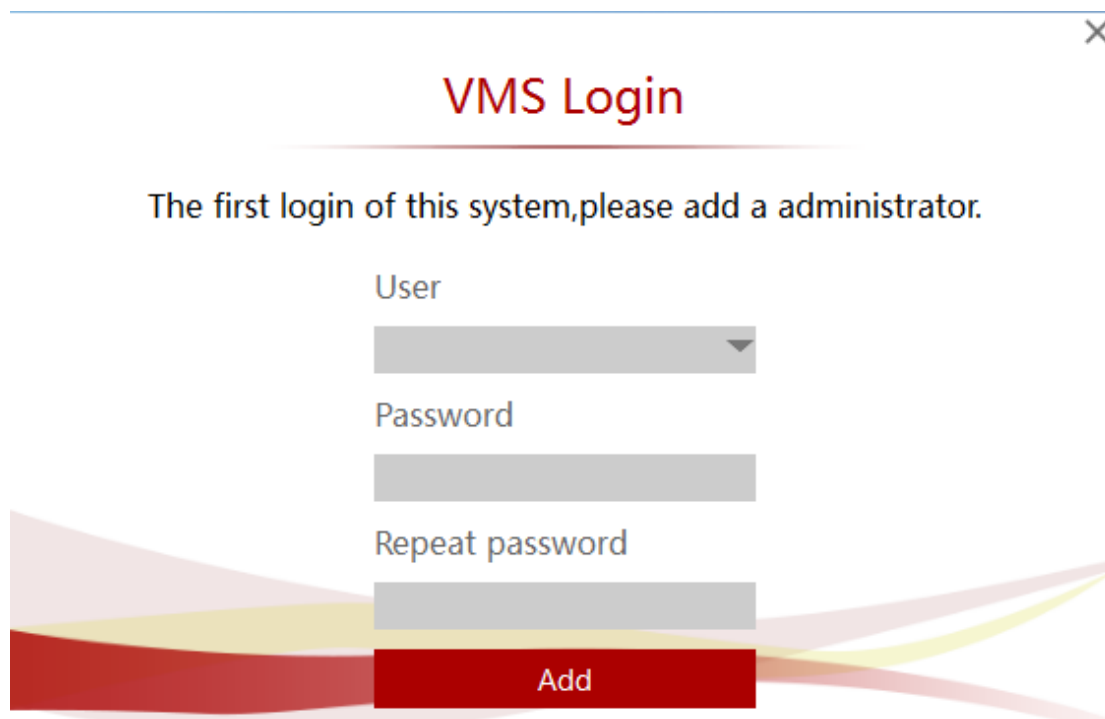
Software installation, installation success as shown below:



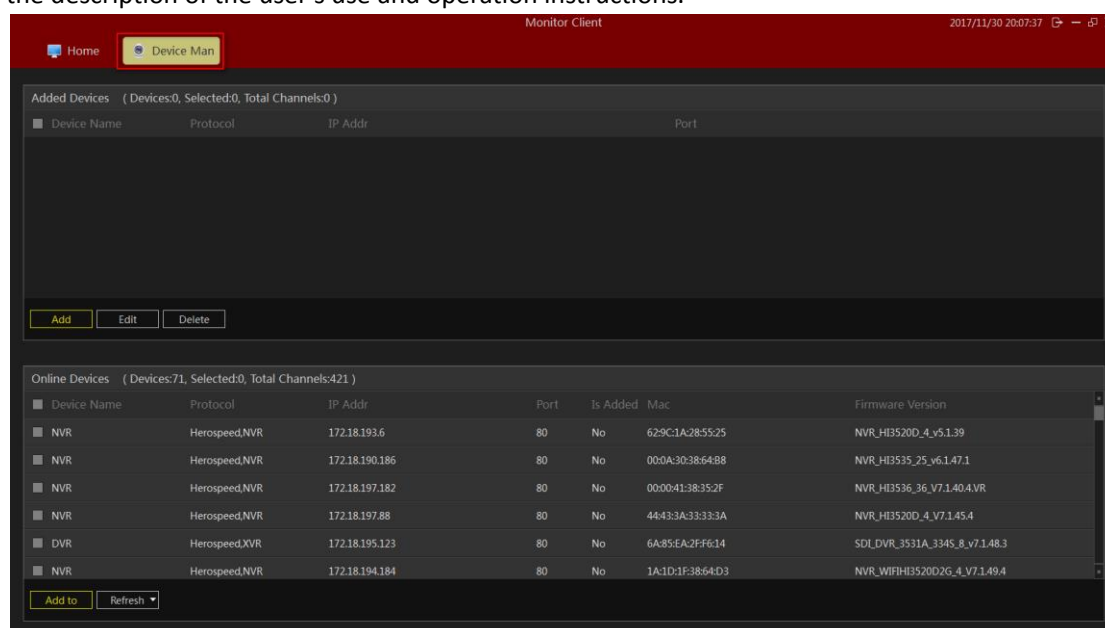
2 Use and operation instructions of VMS Lite



Double-click on the desktop icon , to start the VMS Lite. The first time you use the VMS Lite program, you need to create a super user.



When the superadministrator user adds success, the program automatically enters the main interface. At this point, the device will be added to the interface, and the device can be added to the description of the user's use and operation instructions.



Tips:

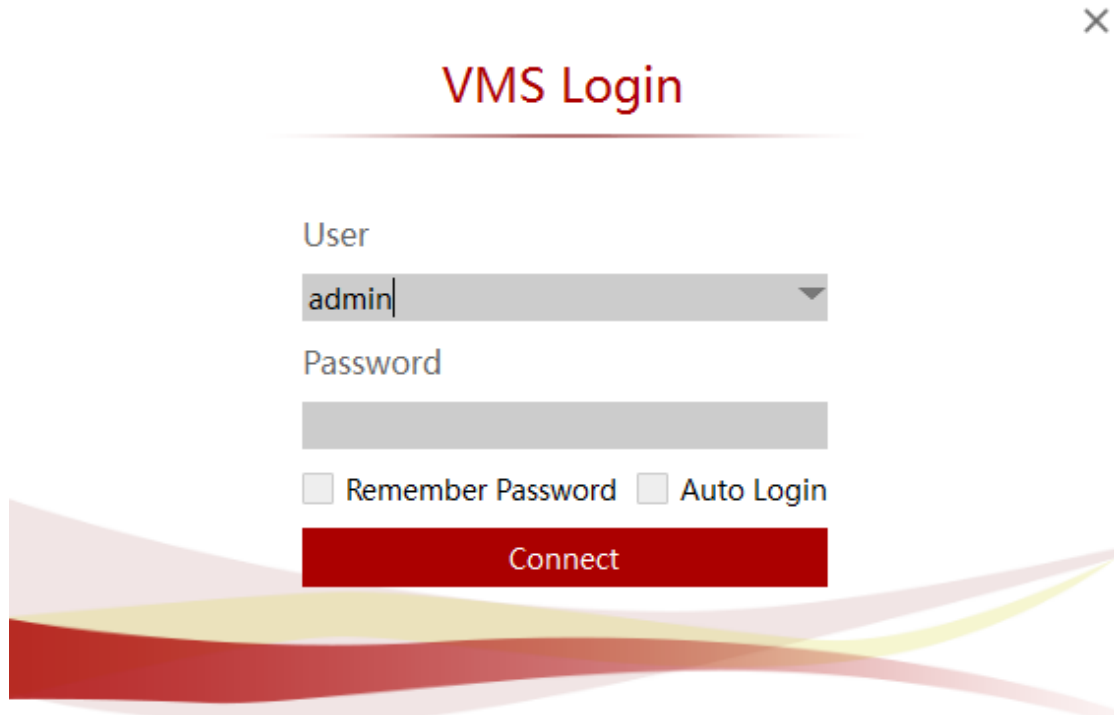
- The first user added to the system is a super user, it has the highest authority.
- For safety, you should complicate the password settings for the superuser.

2.1 Management function usage and operation instructions

Manager can use this to set the configuration and to operating other users. Therefore, this chapter mainly focuses on this part.

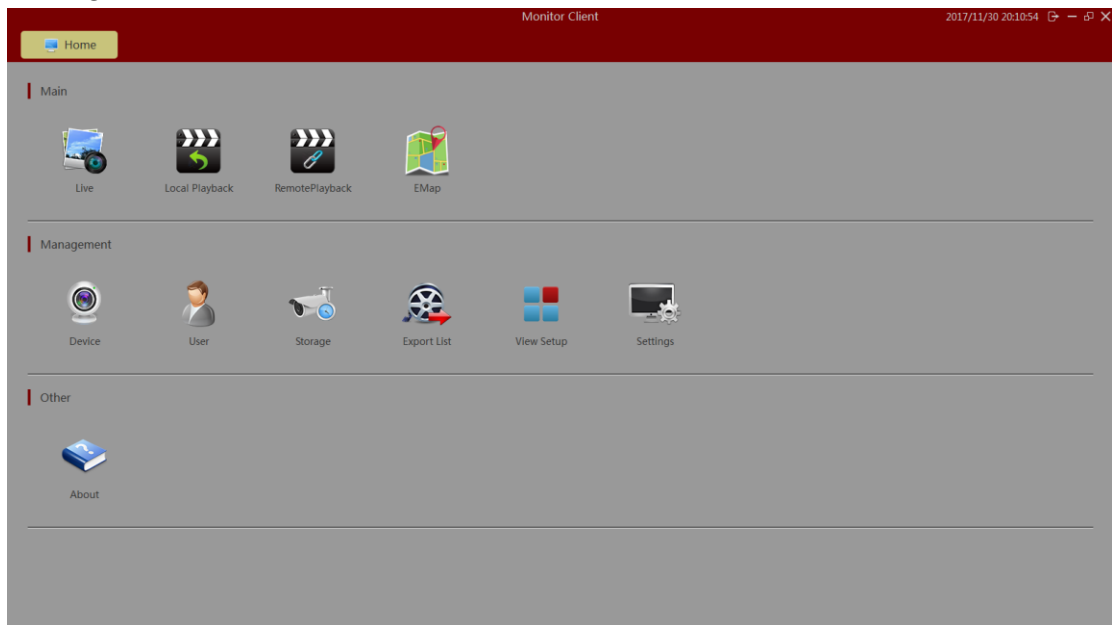
2.1.1 Login

Depending on the permissions, users can be divided into managers and operators. Different permissions correspond to different identities.



A screenshot of a 'VMS Login' dialog box. The title 'VMS Login' is displayed in red at the top center. Below the title, there is a 'User' label followed by a dropdown menu containing the text 'admin'. Below that is a 'Password' label followed by an empty password input field. Underneath the password field are two checkboxes: 'Remember Password' and 'Auto Login', both of which are currently unchecked. At the bottom of the dialog is a prominent red button labeled 'Connect'. The dialog box has a close button (an 'X' icon) in the top right corner.

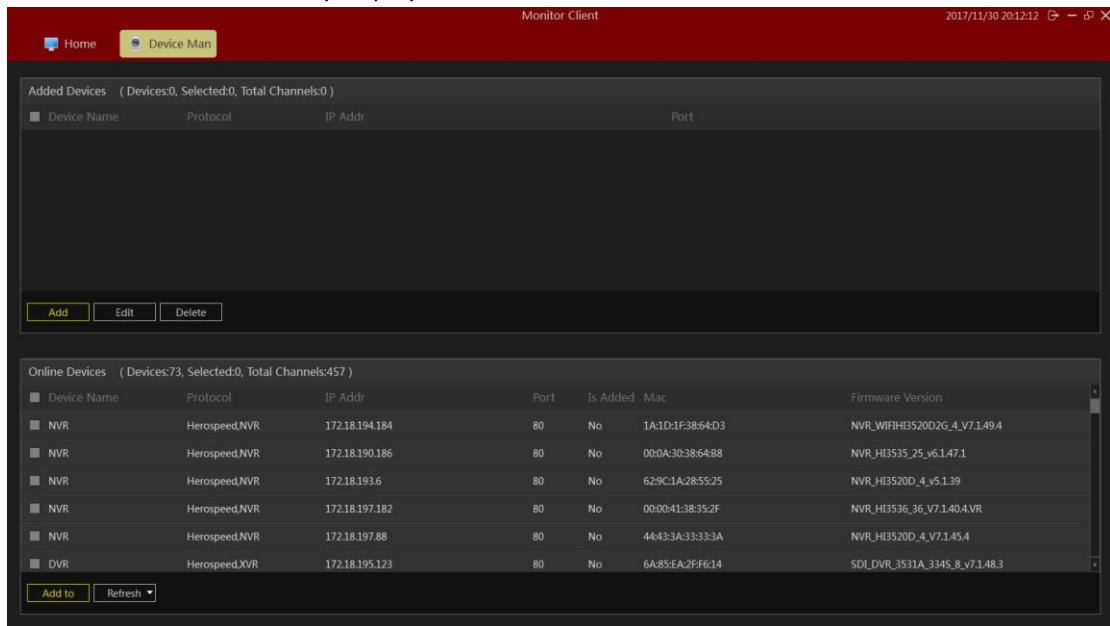
Login to enter the main interface as follows:



2.1.2 Add hardware



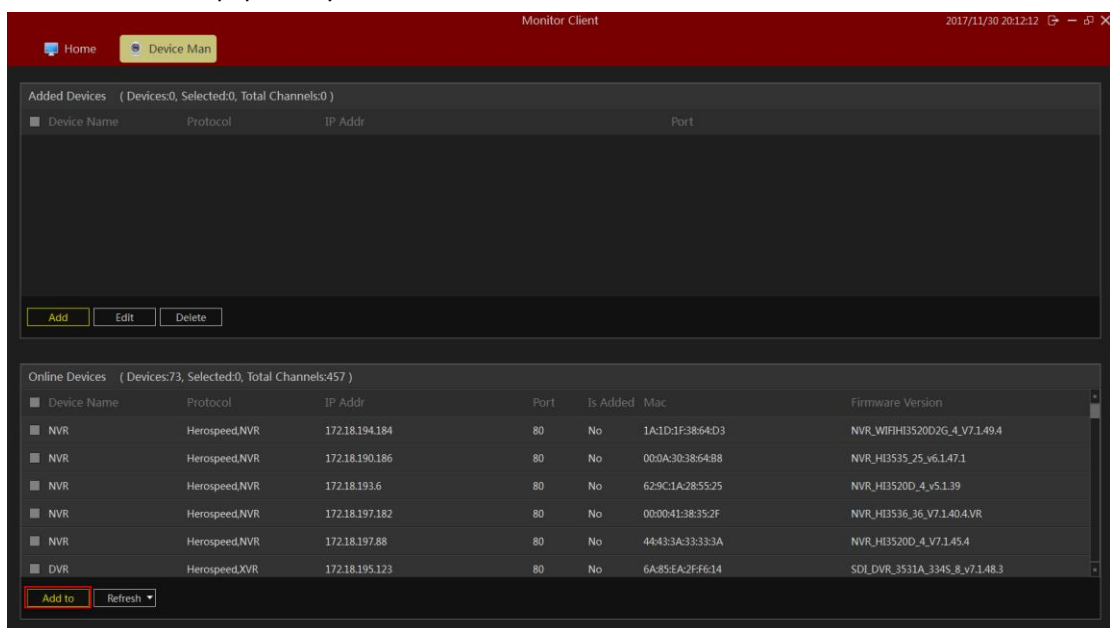
Add new devices to the managed module **Device**. At this time, the hardware device scan in the LAN will be automatically displayed as shown below.



2.1.2.1 Adding scanning equipment

Choose the equipment you need and click

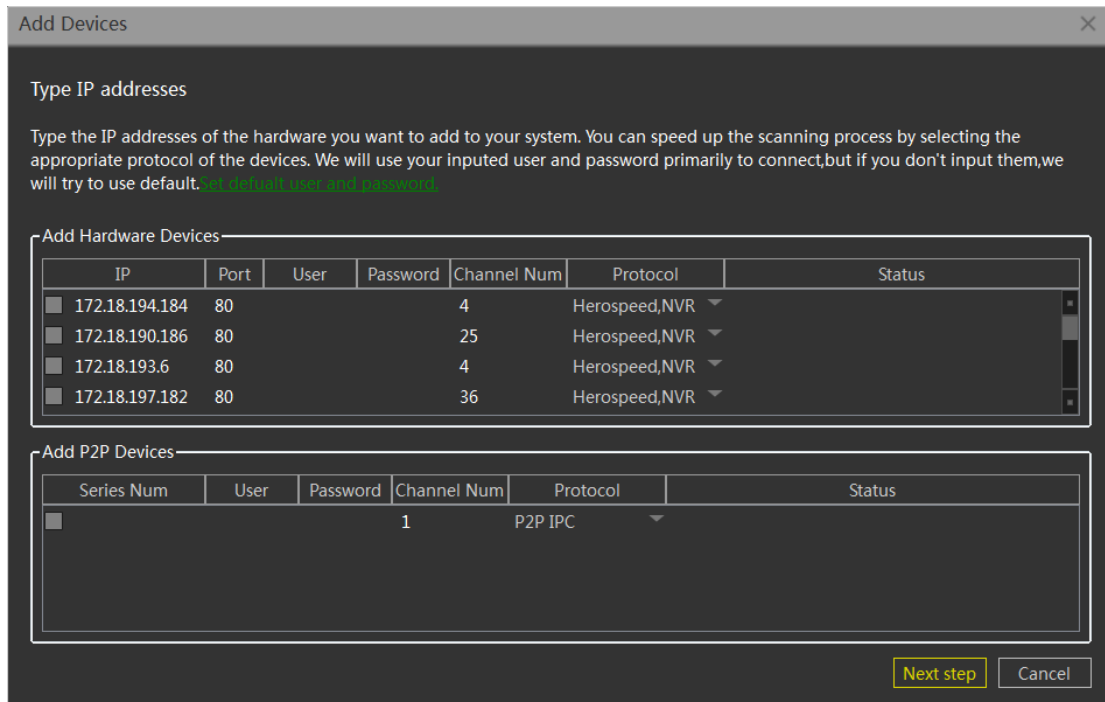
Add to



Enter the following page, If you have configured automatic validation, you can click directly

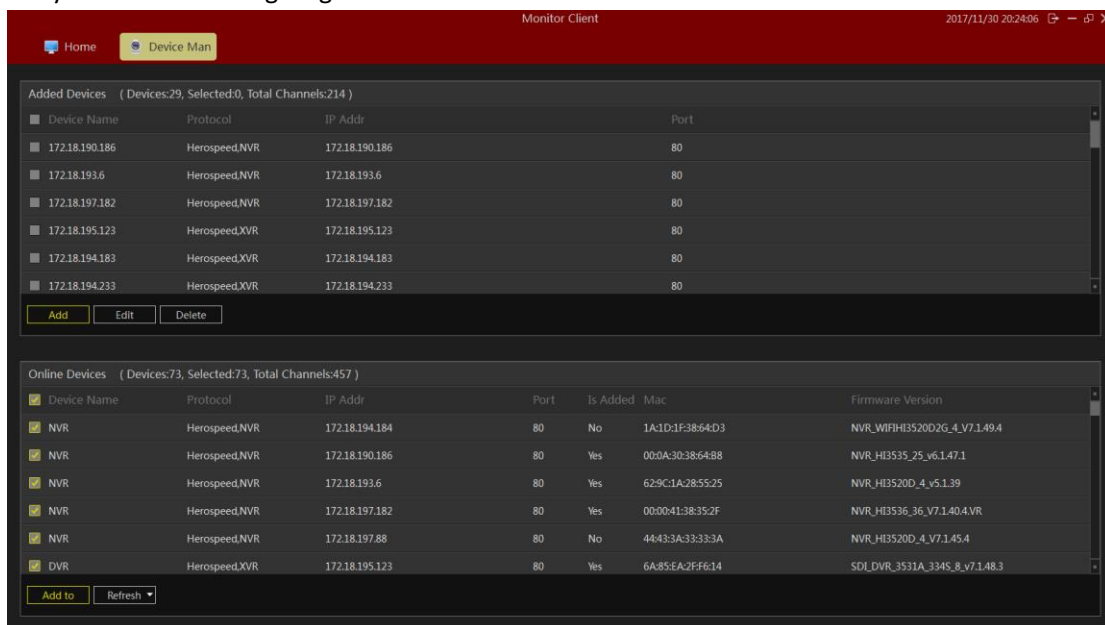
Next step

Otherwise, refer to configuring the automatic validation section for configuration, or manually enter the user and password for configuration.



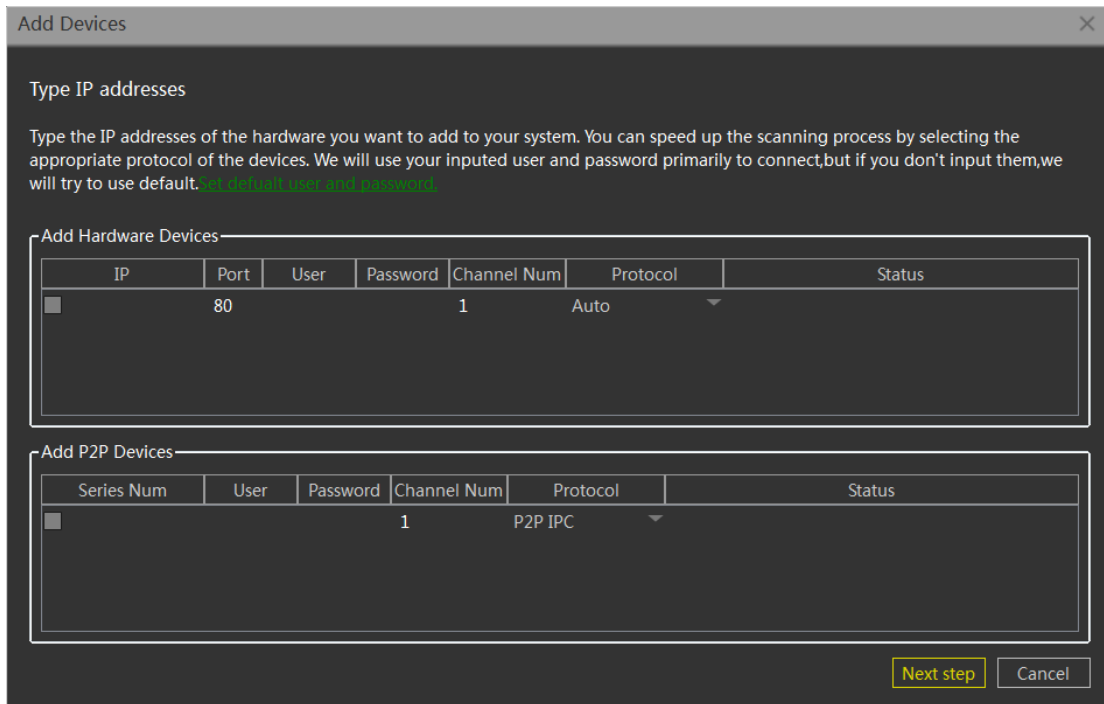
Add

Click next to complete the validation, and click **Add** to add the device to the system. The following diagram is shown below.

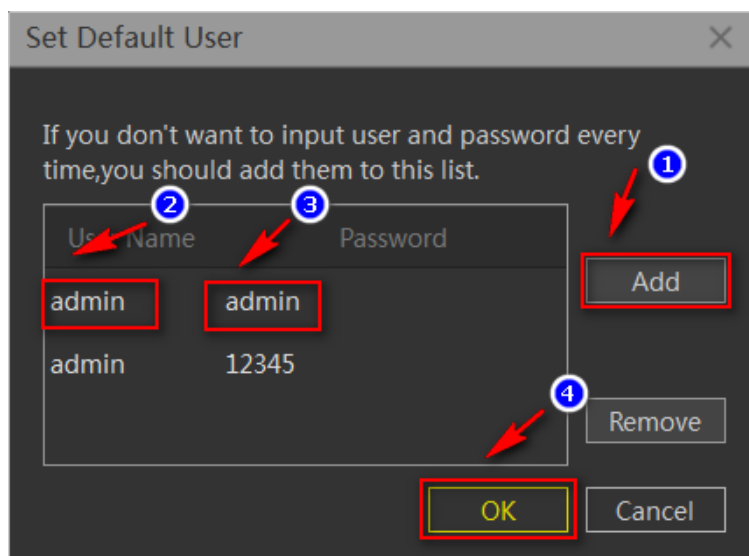


2.1.2.2 Configuring automatic verification

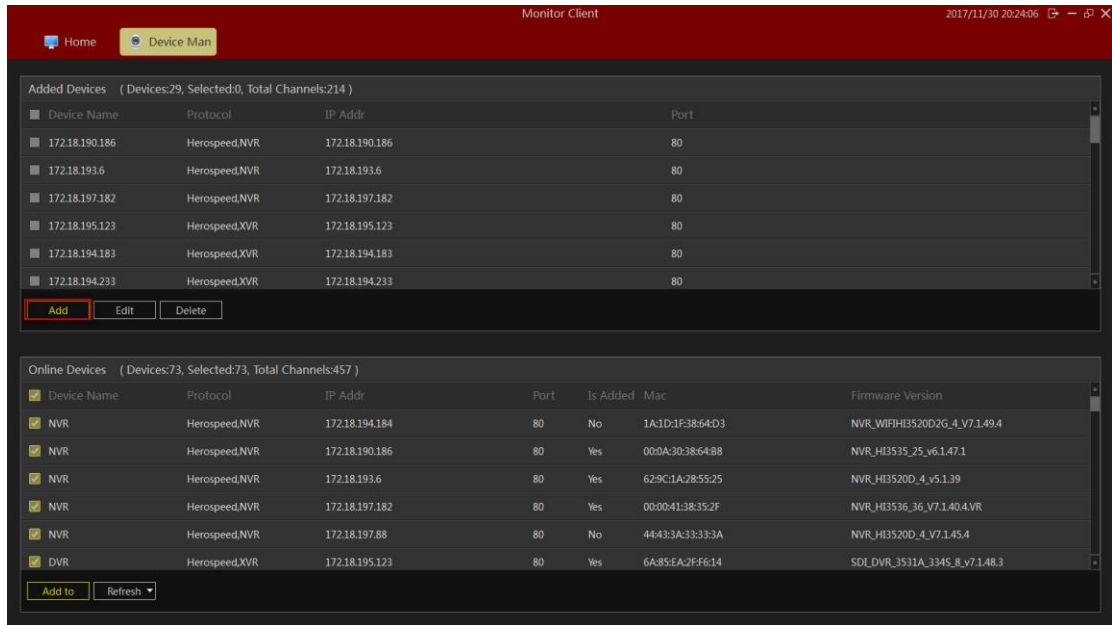
For convenience of adding devices, automatic verification can be selected. Enter the relevant interface and click on the default username password to add relevant information.



Pop up adds user name and password dialog box(Try to input all user and password combinations to add to the device).

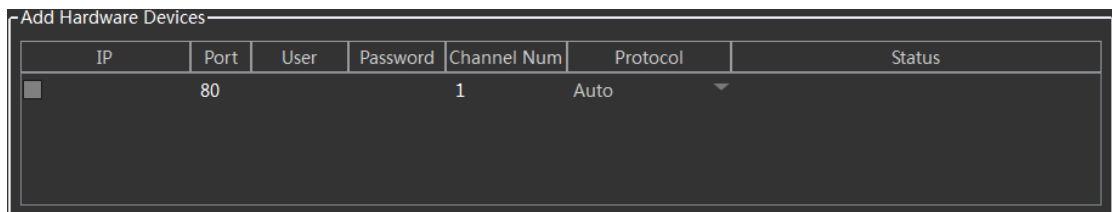


2.1.2.3 Manual Verification hardware



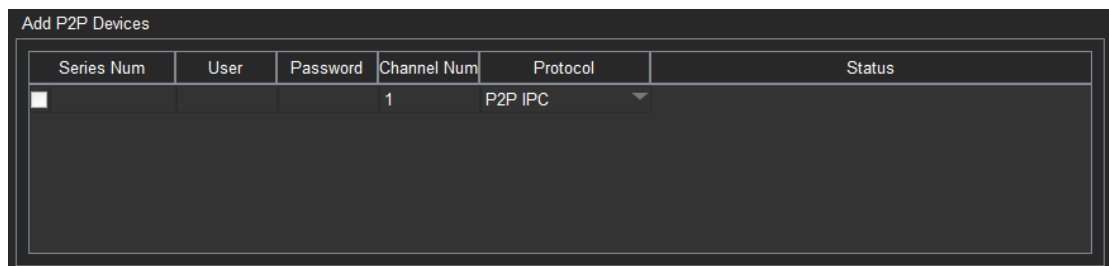
2.1.2.3.1 IP address is added hardware

Enter the IP or domain name, port number, user name, password, and the number of channels to choose the type of new equipment Driver.



2.1.2.3.2 Add hardwareSerial Numbers

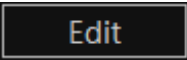
Input Devices SN code to add P2P device.



Completed manually add devices, software can add up to 64 channels.

Device Name	Protocol	IP Addr	Port
172.18.190.166	OnvifIPC	172.18.190.166	8999
172.18.190.180	Herospeed,Fisheye	172.18.190.180	80
172.18.190.186	Herospeed,NVR	172.18.190.186	80
172.18.190.205	OnvifIPC	172.18.190.205	8999
172.18.190.31	OnvifIPC	172.18.190.31	8031
172.18.190.32	OnvifIPC	172.18.190.32	8032

2.1.2.4 edit device properties

Device properties can be operated directly on the device management interface, Select the device that needs to be operated, and click .

Device Name	Protocol	IP Addr	Port
172.18.190.166	OnvifIPC	172.18.190.166	8999
172.18.190.180	Herospeed,Fisheye	172.18.190.180	80
172.18.190.186	Herospeed,NVR	172.18.190.186	80
172.18.190.205	OnvifIPC	172.18.190.205	8999
172.18.190.31	OnvifIPC	172.18.190.31	8031
172.18.190.32	OnvifIPC	172.18.190.32	8032

Pop up device properties dialog box.

Edit Devices

Name:

Ip:

Port:

Protocol:

Channel Count:

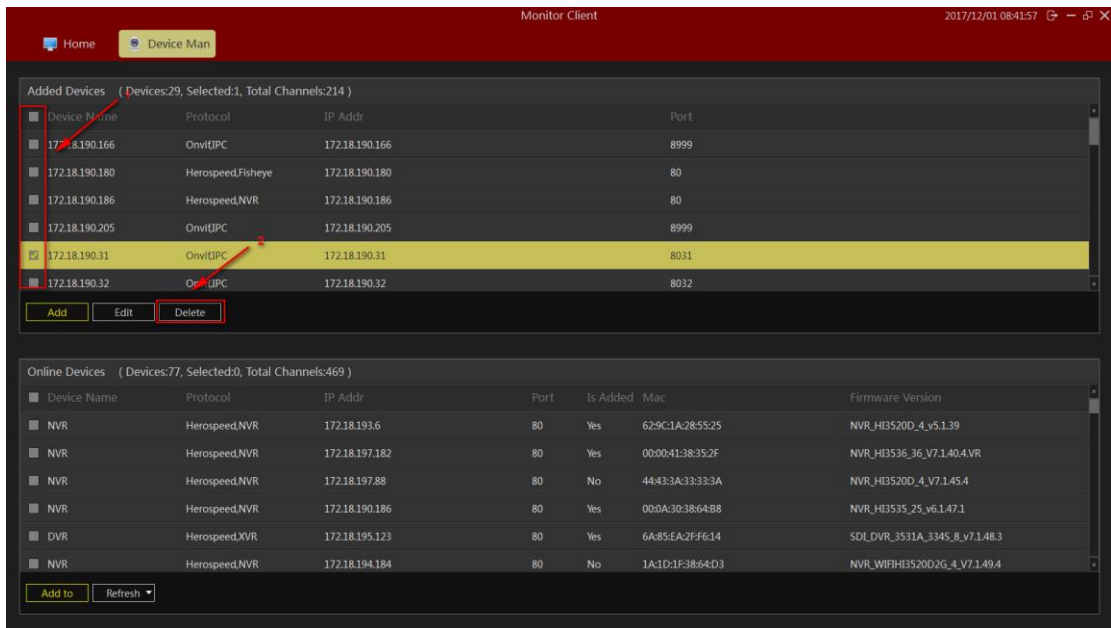
User:

Password:

Here you can modify the device name, device port number, the number of devices, the device login user name and login password.

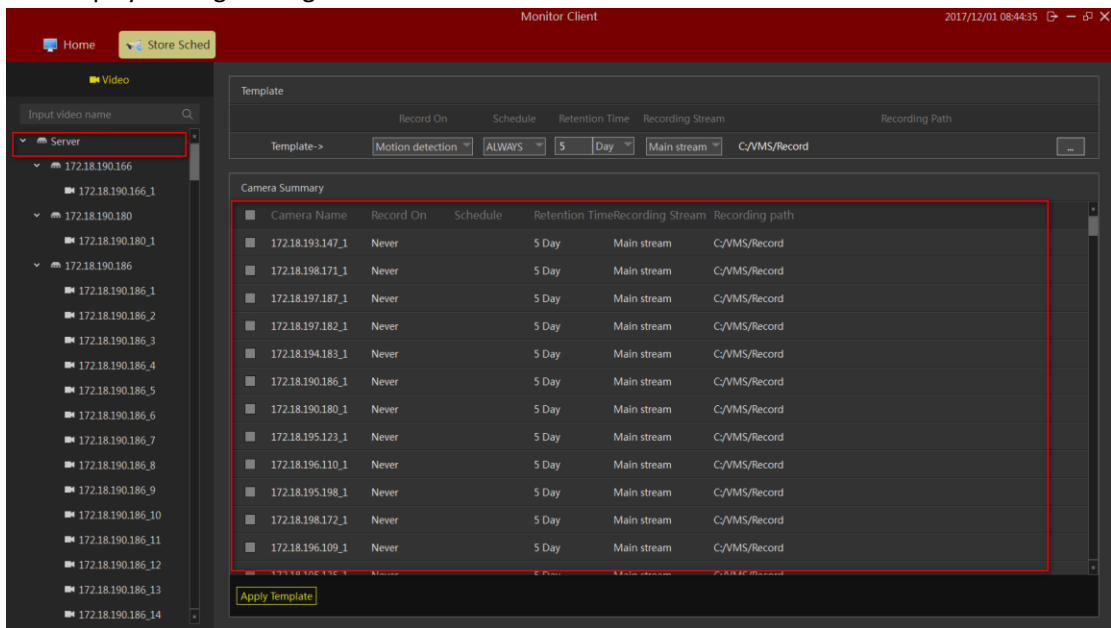
2.1.2.5 Remove equipment

Check out the device that needs to be removed and click delete. Other information associated with the change device will also be deleted automatically.

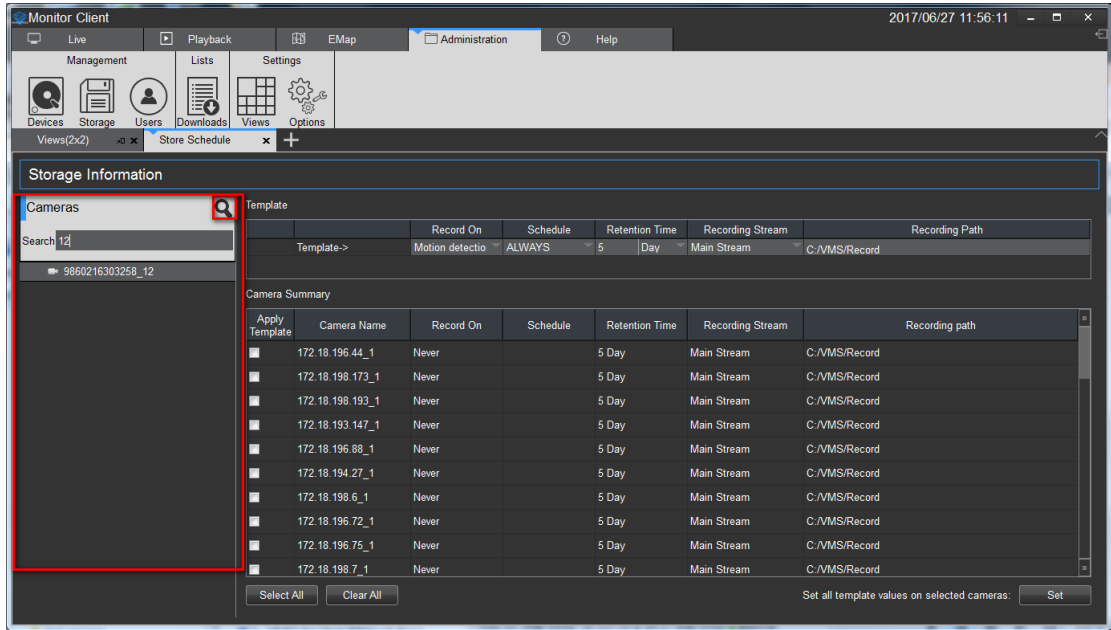



2.1.3 Storage Configuration

Displays storage configuration information for all devices.



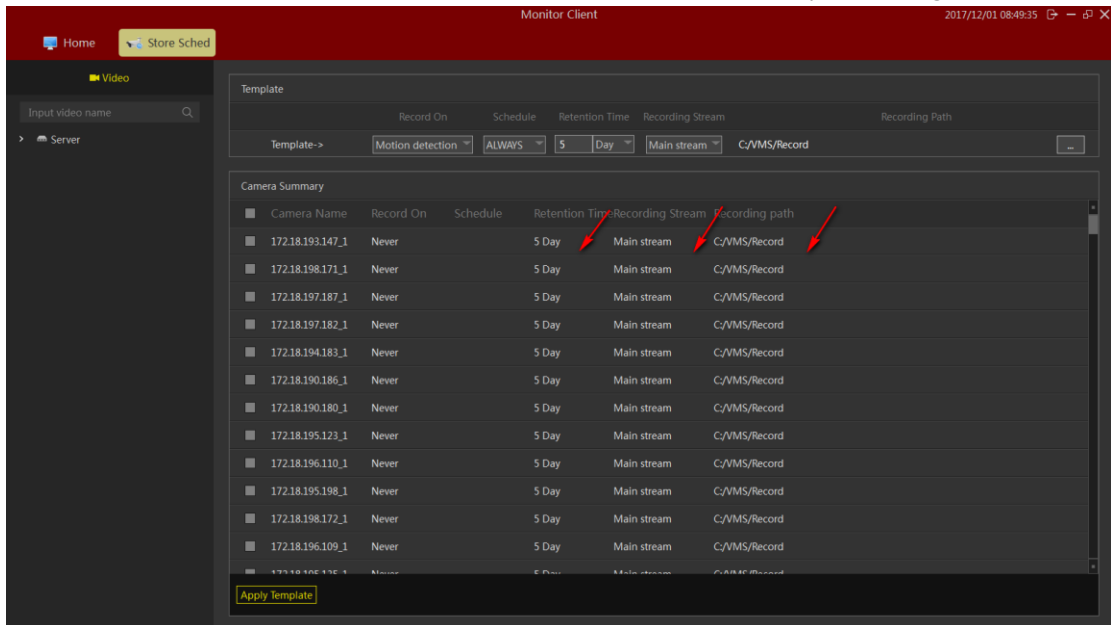
Click on the left to display all channels, channels of a device, or channel information of a single channel. This information is shown in the figure above.



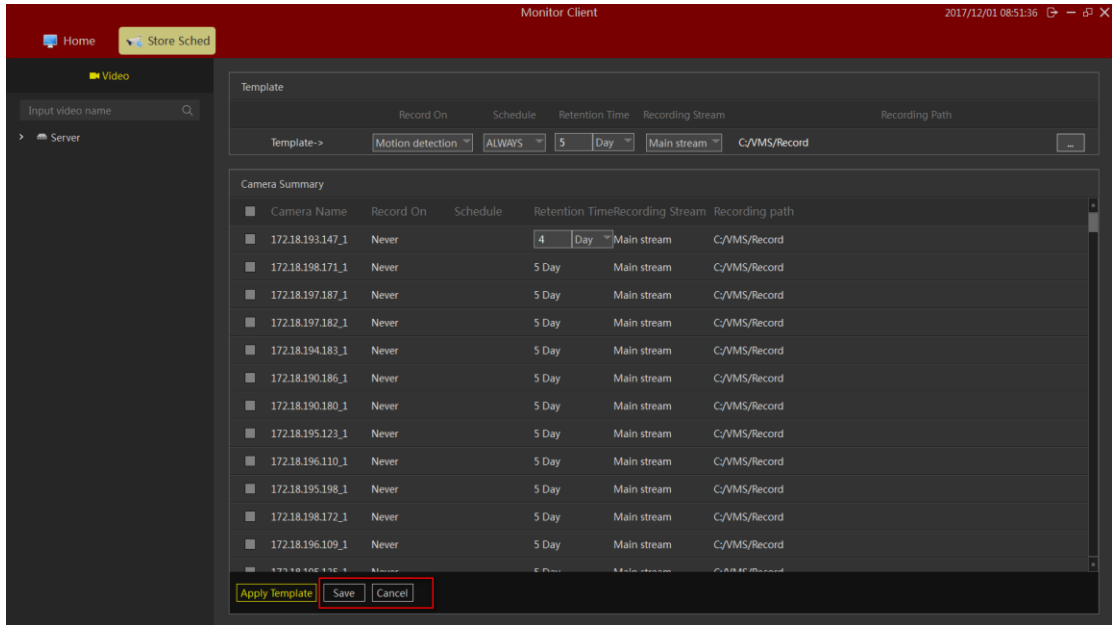
You can also manually search for the specified device,click  .

2.1.3.1 Configure the storage path, stream type, retention time

Click the red arrow location to save time, video stream, and video path settings.

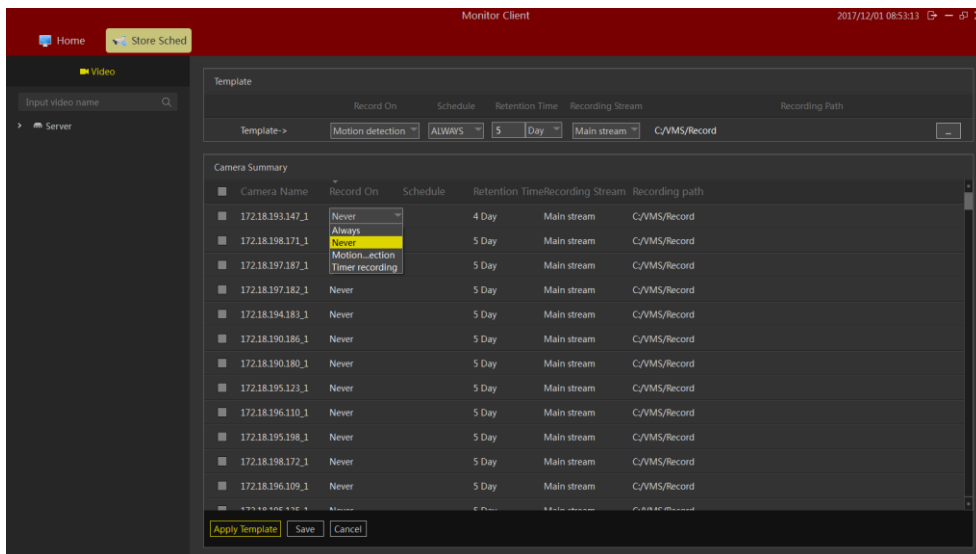


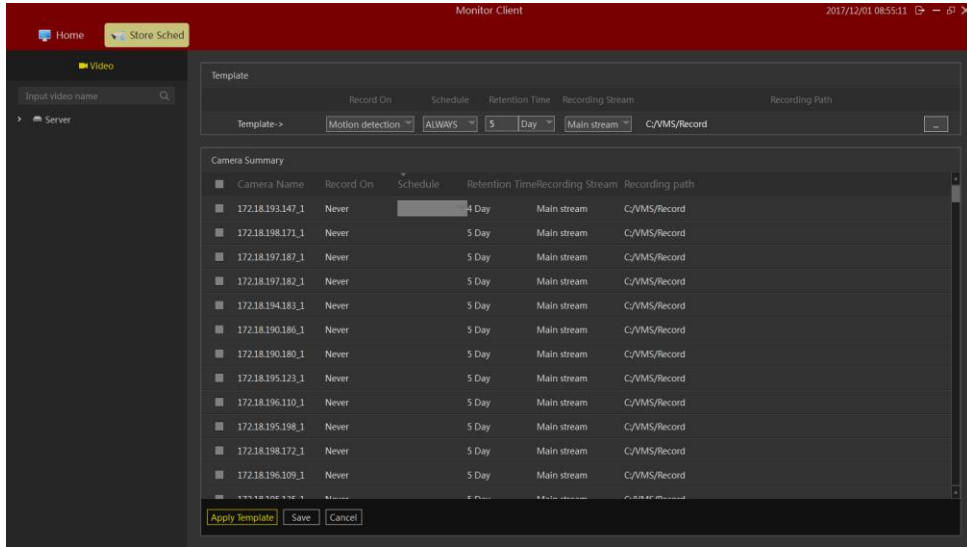
When the information about the channel is modified, the system will pop up the save prompt button.You can choose whether to modify the channel or cancel it.



2.1.3.2 configure the recording type, time change

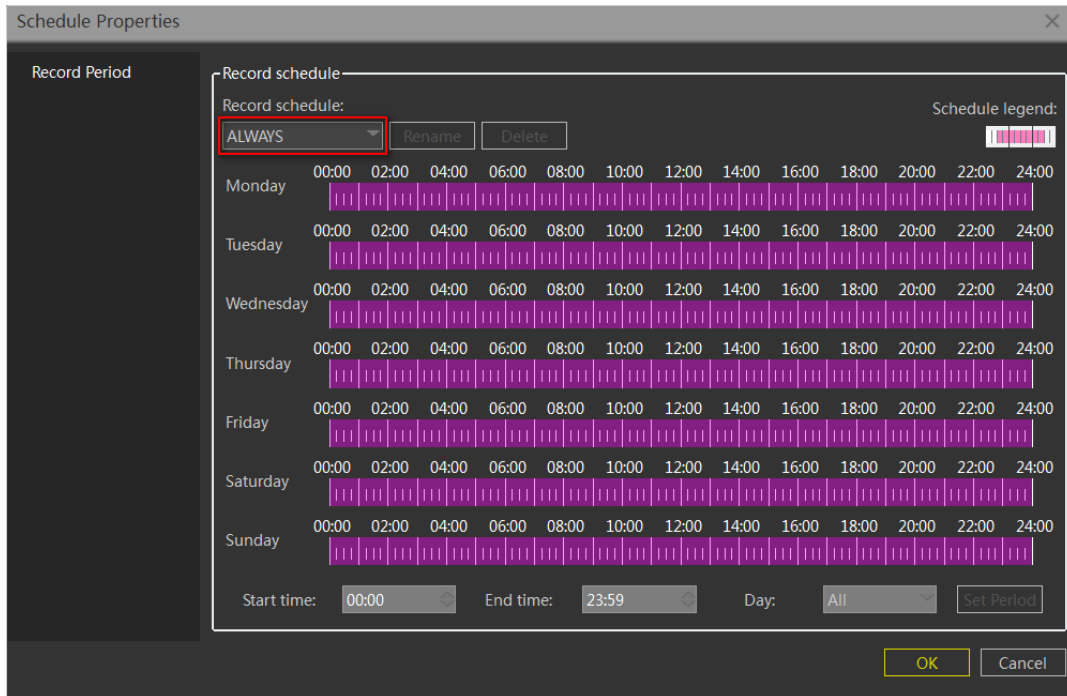
According to the demand, different video trigger types can be selected, and the corresponding plan type can be selected after selecting the video type. You can choose the default plan type, or you can customize the time plan information based on the actual requirements.



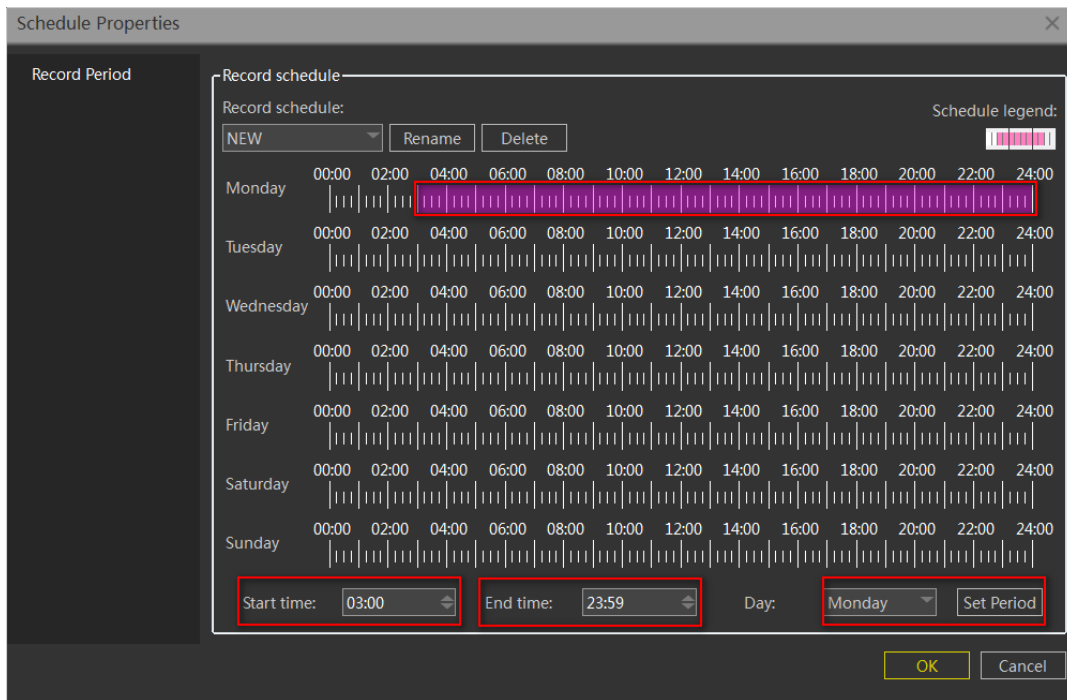


2.1.3.3 Configuration Planned attribute

Click edit to enter the plan configuration screen, and click on the drop-down box to select the new option.

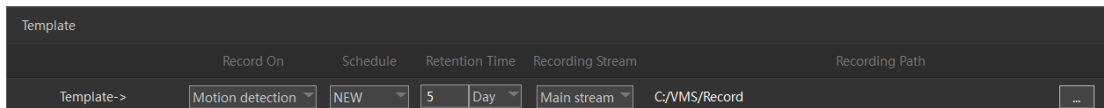


The planning page can manually drag and drop the setting time information or the information of the scheduled time can be set by entering the time point. When dragging the time error, click the right mouse to delete the time setting of the date. Click Ok to complete the Settings of the video program.



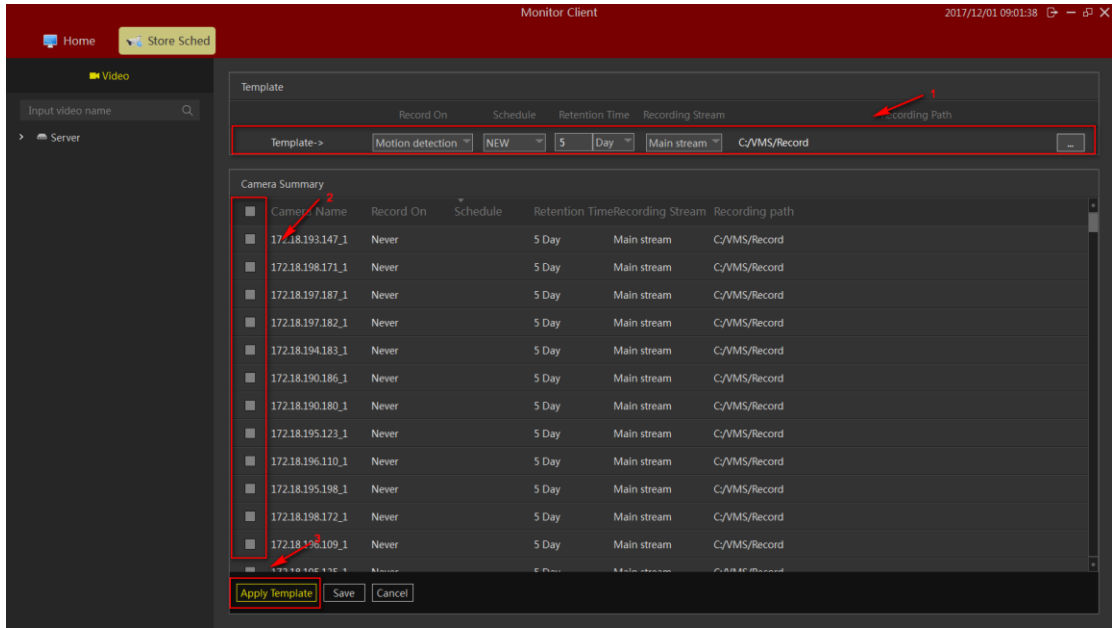
2.1.3.4 Configuration Template

When a large number of channel configuration information needs to be modified, you can configure the template first and then apply it to the specified channel.



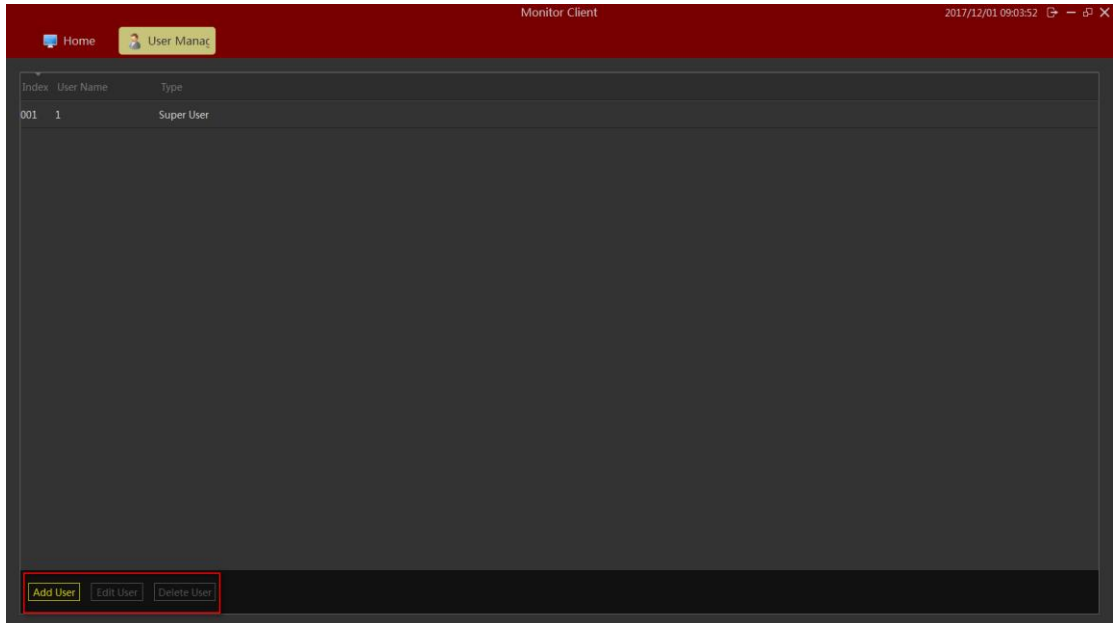
As shown below:

- 1> Edit Template
- 2> Select the template you want to apply the camera
- 3> settings to the camera



2.1.4 User Management

You can add, delete, and modify users in the "user".



2.1.4.1 Edit User Information

Click **Add User**, the "add user" dialog box will pop up.

Item	Function
User type	The user's user type is divided into administrators and operators. Different user types have different permissions.
User name	Set the login name for this user.
Password	Set the user's password.
Password(repeat)	Enter the user's password again.
user access	Current user's permissions.
	Current user related camera permission information.

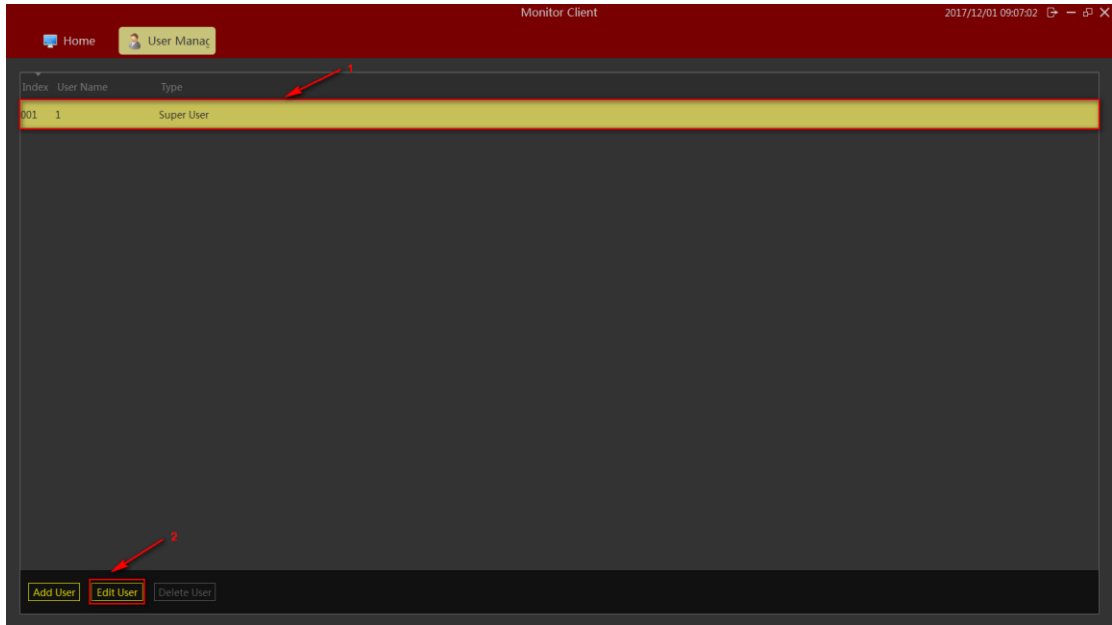
Configure "user type", "user name", "password", "confirm password", and relevant permission information. Single machine "save" to add user.

Introductions:

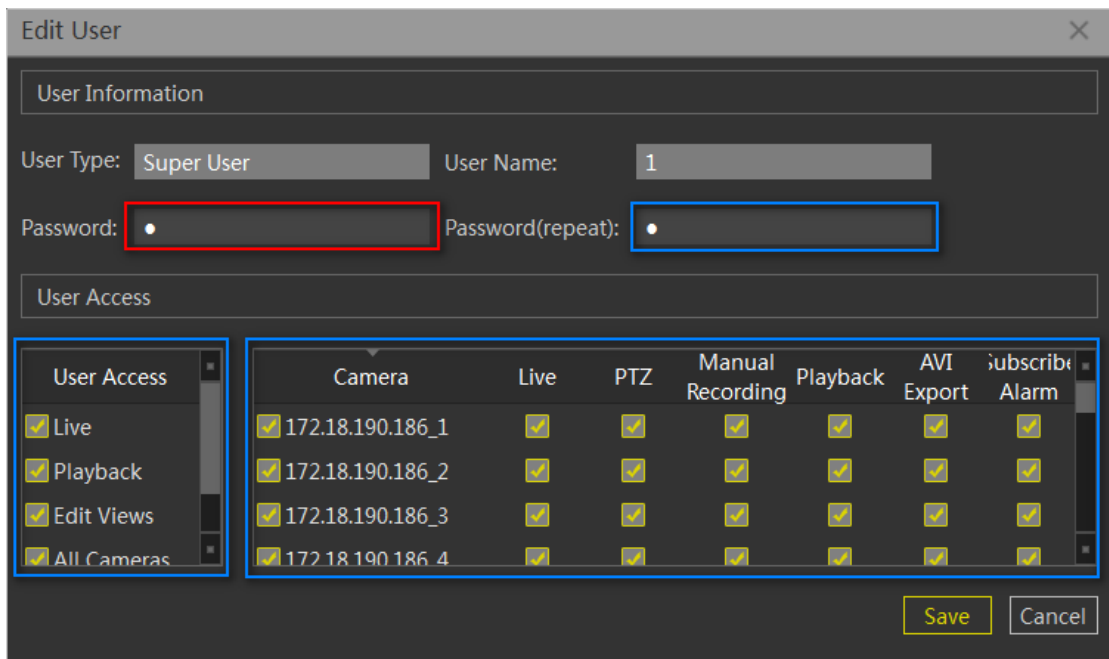
Superadministrators have the highest permissions and only one, but only when the system is first run. Super user can add administrator type user and operator type user. The administrator can only add operator user types. The permission of the user access is not greater than that of the parent user.

2.1.4.2 Edit User Information

Modify user related information. You can operate this user account and the account with lower authority than this account. Select the user line that you want to edit, and click the "Edit user" button.



You can modify the user in the dialog box that pops up. The information in the red and yellow boxes can be modified when the user has a lower access account, but the operating account is not in the yellow box for the login account.



2.1.4.3 Delete user

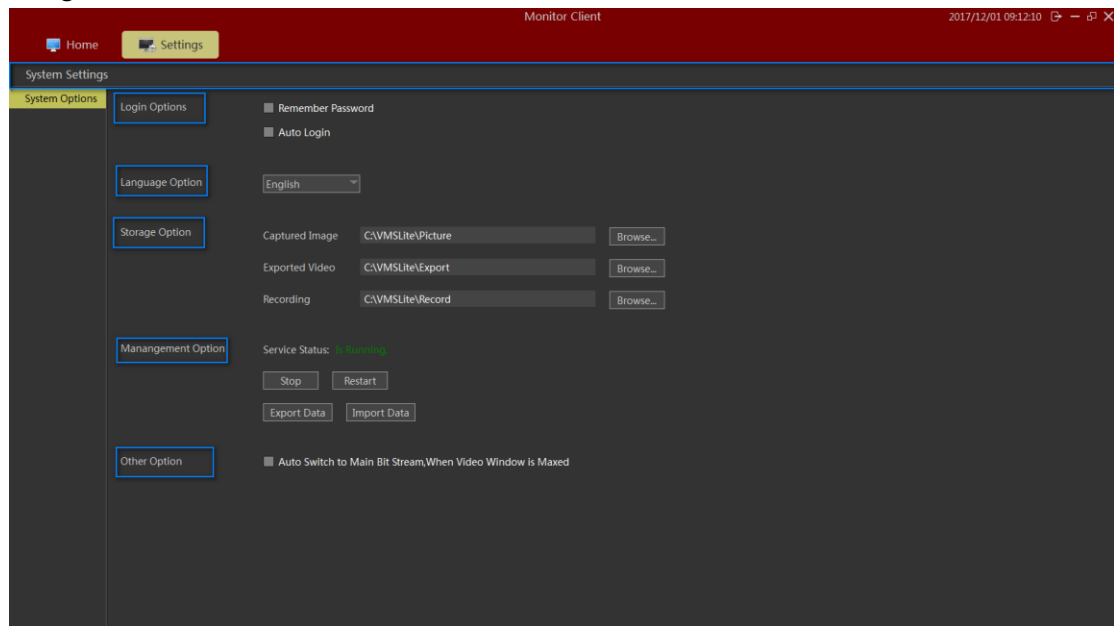
When you click on non-logged-in user, this **Delete User** button becomes operational. Clicking on the delete user button will pop up the "confirm delete user" dialog box. Confirm that the user is deleted.

Explain:

The user list will display users and users with lower permission based on the permission of the user. Users can only delete users with lower user rights than users who log in.

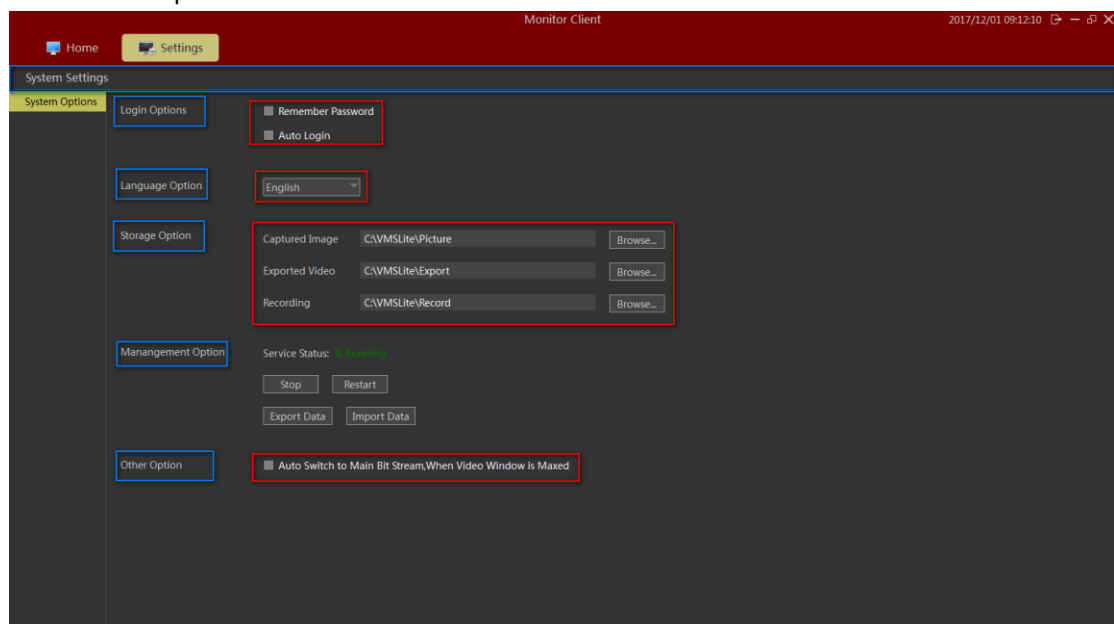
2.1.5 System parameter settings

The system parameters include some basic login information configuration, system language selection, storage location selection and advanced service management and import and export configuration.



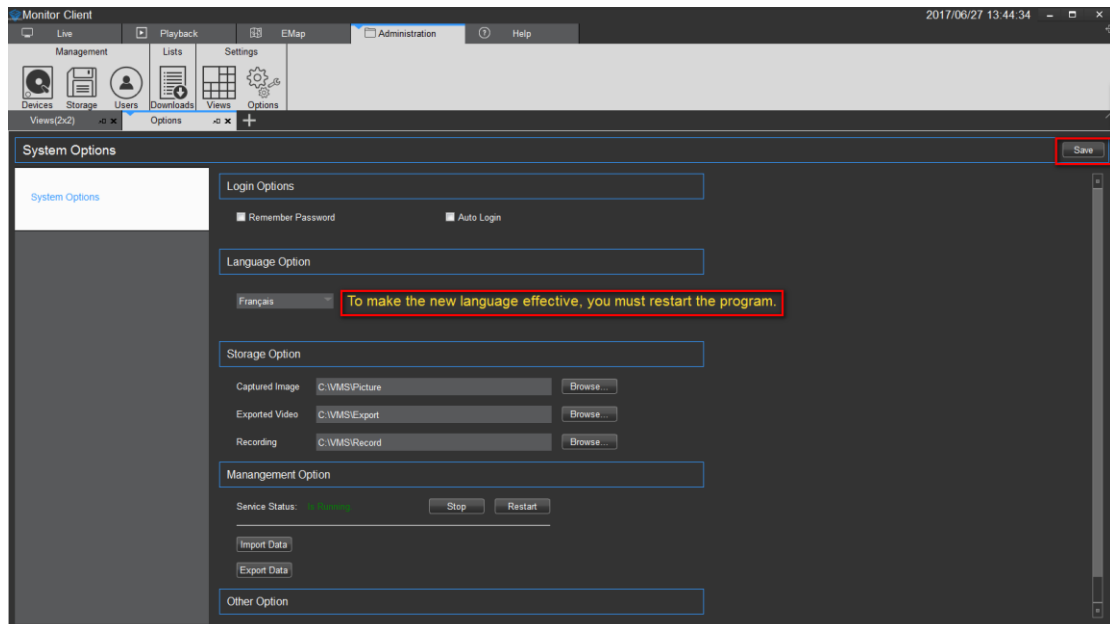
2.1.5.1 Setting of basic parameters

The basic parameters are shown in the red section below.



① Login Options: The login options module and login interface login options are consistent. Users can set their own requirements to remember passwords and automatic login, To facilitate the landing operation or to ensure the security of the system.

② Language Option: Language options support the multi-lingual switch, the switch to the language will need to restart the VMS Lite software.



③ Storage Option: Storage options can be set to capture images, export video, and record video and other storage locations.

④ Management Option: The automatic switching of the code stream automatically switches to the main code stream when the window is maximized.



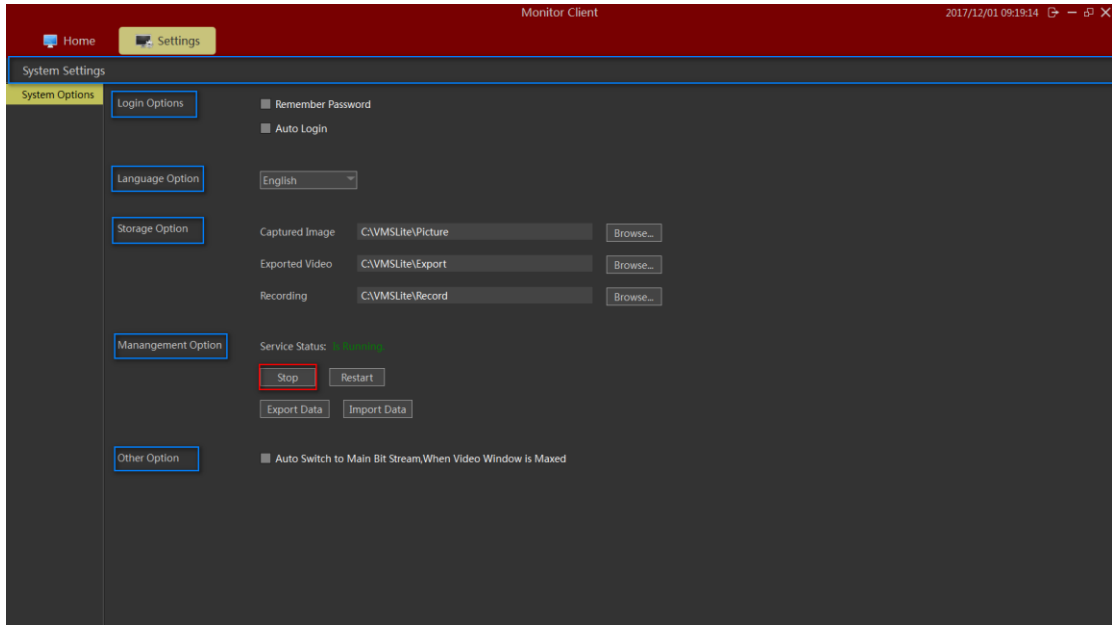
2.1.5.2 Settings Administration options Settings

The administration options include setting up the VMS Lite_ Server service and importing the export client.



2.1.5.2.1 Setting of service state

Background VMS Lite_ Server program control.

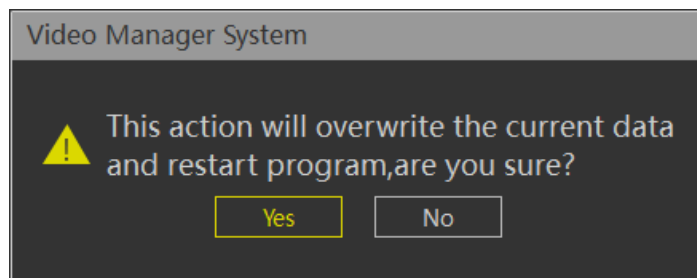


The state of VMS Lite Server can be controlled. Only after the status of the video can be stored, the device state can work normally.

2.1.5.2.2 Import the export client configuration

The relevant configuration of the client is exported, convenient and convenient for the client configuration. Export configuration generation. SQL file save. The import will configure the relevant.sql file import.

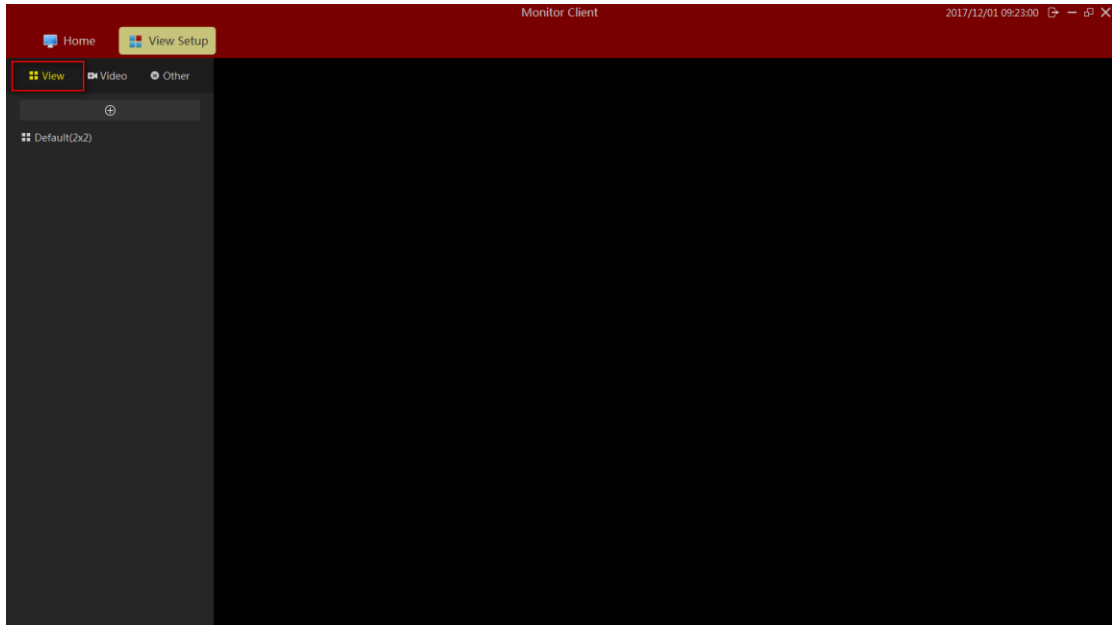
- Step 1 Click **Import Data**.
- Step 2 Chose "Yes".



- Step 3 Select the specified configuration file in the pop-up import configuration dialog box.
- Step 4 After the configuration is successful, restart the client.


2.1.6 View Settings

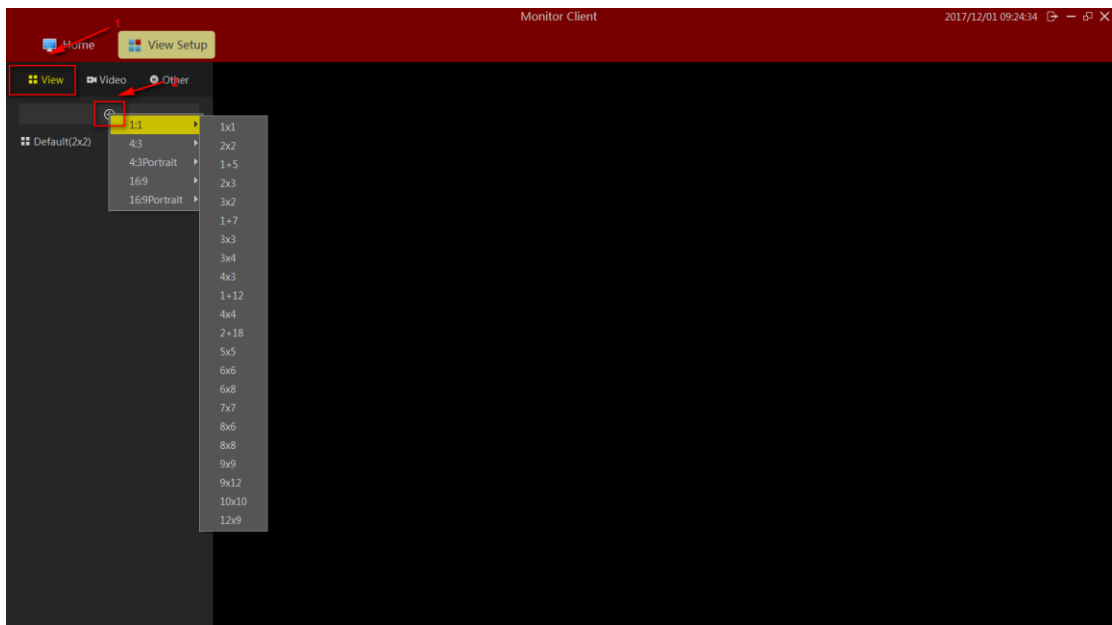
The role of view is that you can pre-edit content layout and views good views, quickly switch the video area. And there will be saved to the VMS platform for later use.



2.1.6.1 View Editor

2.1.6.1.1 New View

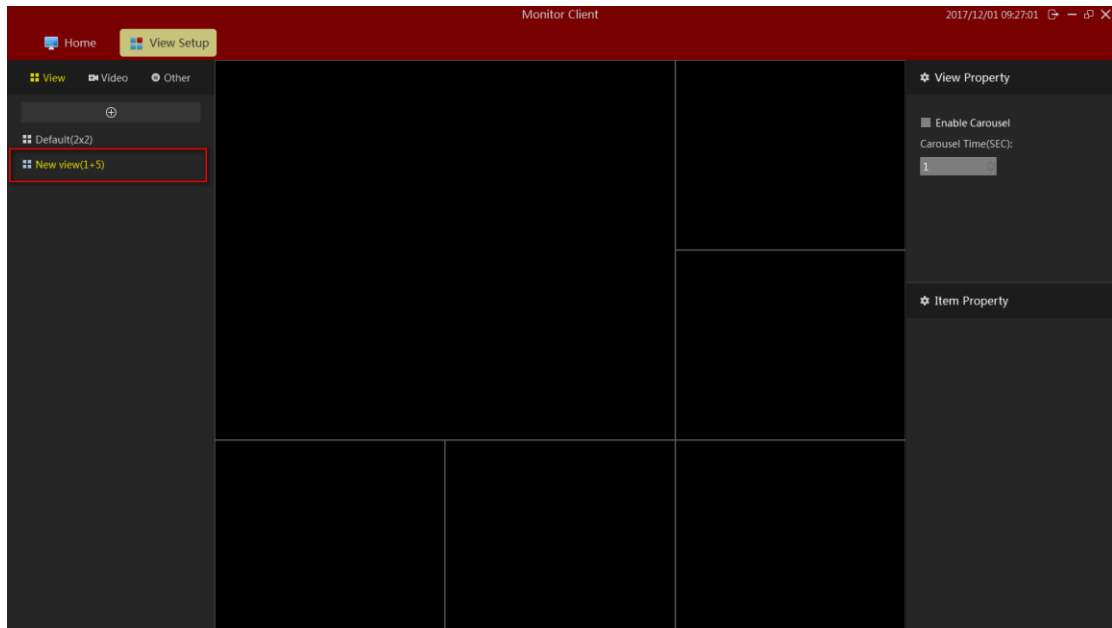
Click the Add button  to select the desired view layout type



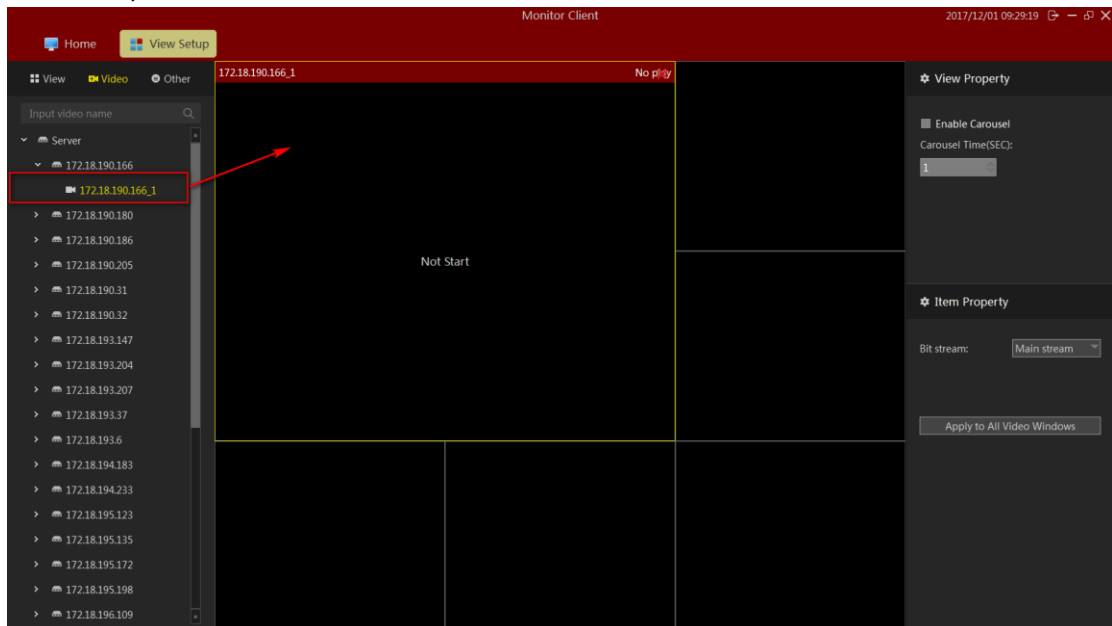
2.1.6.1.2 view content editor

There are four types of views content, 1 Camera 2 Image, 3.HTML page 4 video carousel.

Select the view for editing.

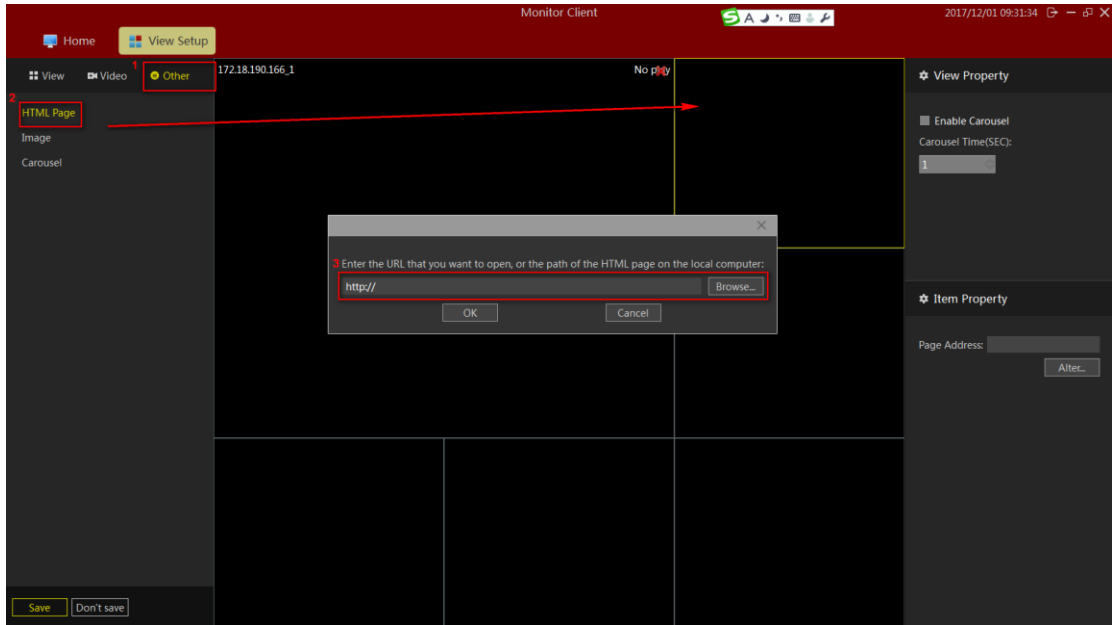


1> Set View window to add a video device, select the camera, onto the target window to complete the video to add.

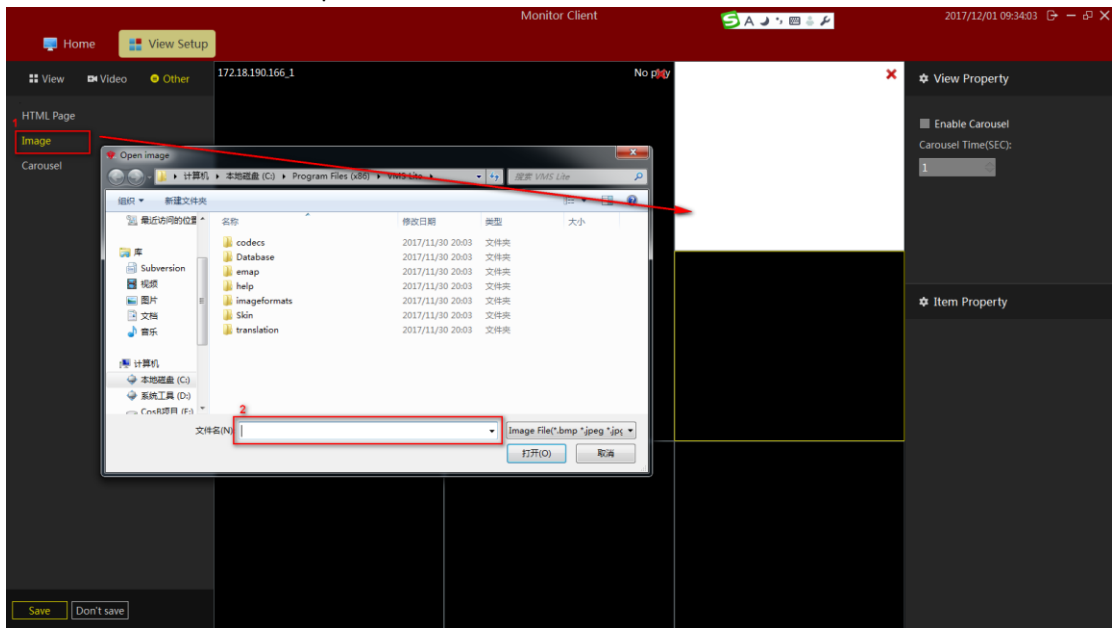


2> Set the page view window to add text

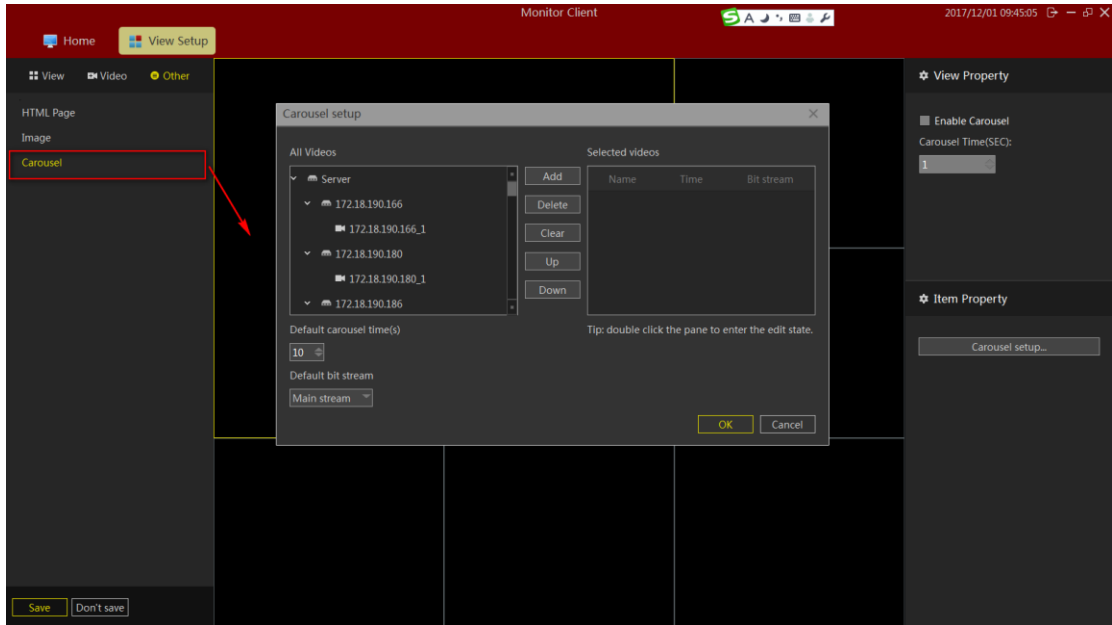
- a. Click on other items
- b. Select the "HTML page"
- c. Drag the specified window
- d. Enter the web address



- 3> Set View window Add image
- a. Select the "Image"
 - b. Drag a specified window
 - c. Select a picture

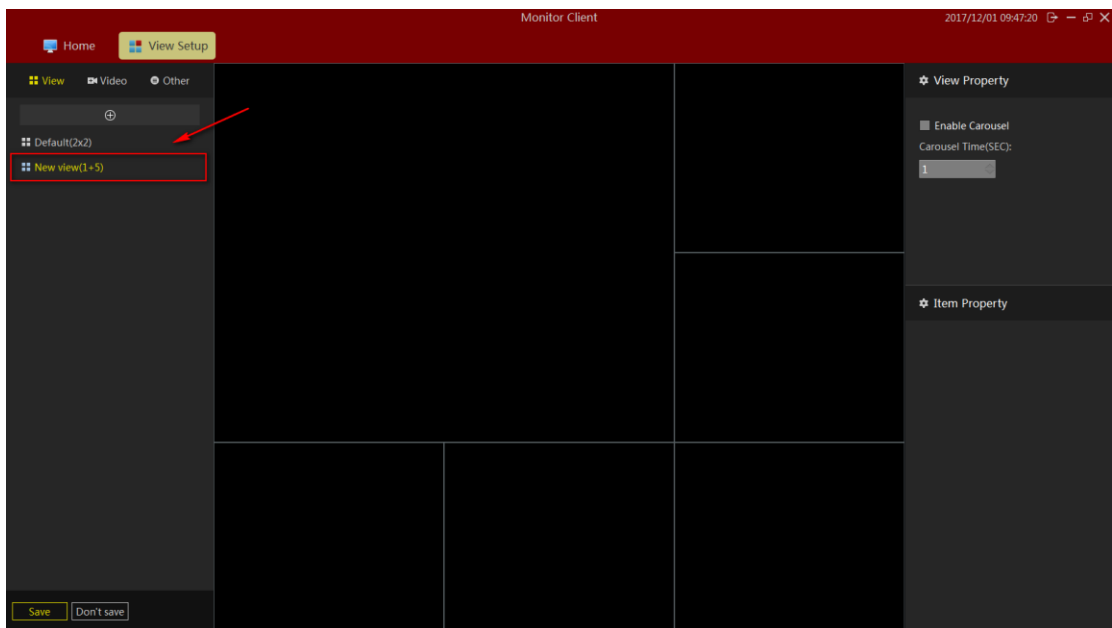


- 4> Set window view window to add round robin
- a. Select the "round robin"
 - b. Drag a specified window
 - c. Select the desired window polling device
 - d. Set the video window polling time
 - e. Set the video stream type



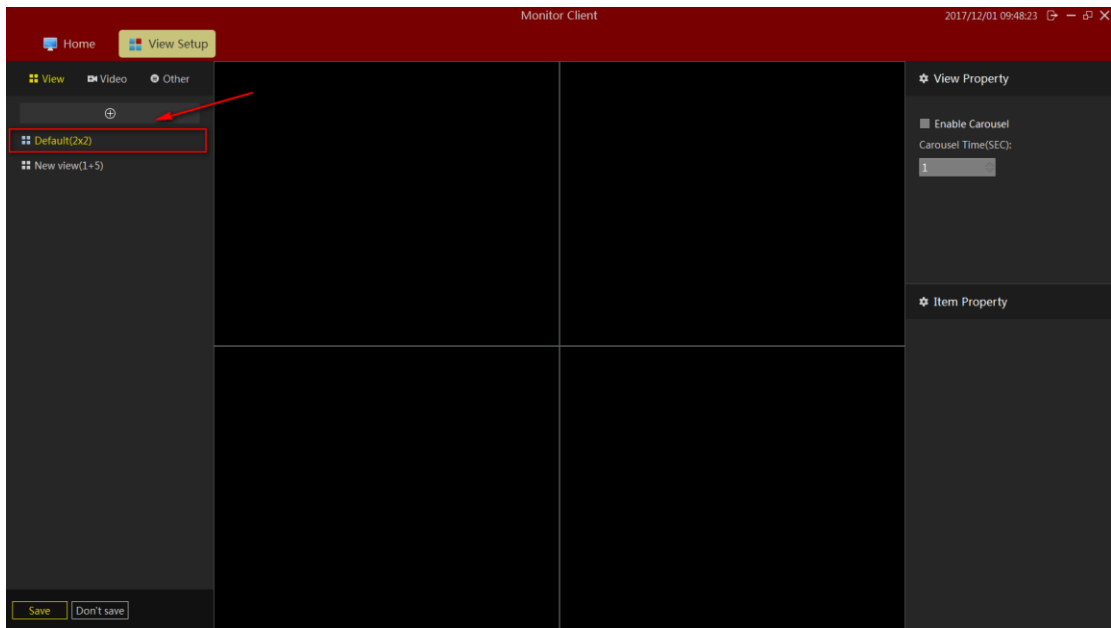
2.1.6.1.3 Modify the view name

Double-click to modify the view to enter edit mode, modify the view name.



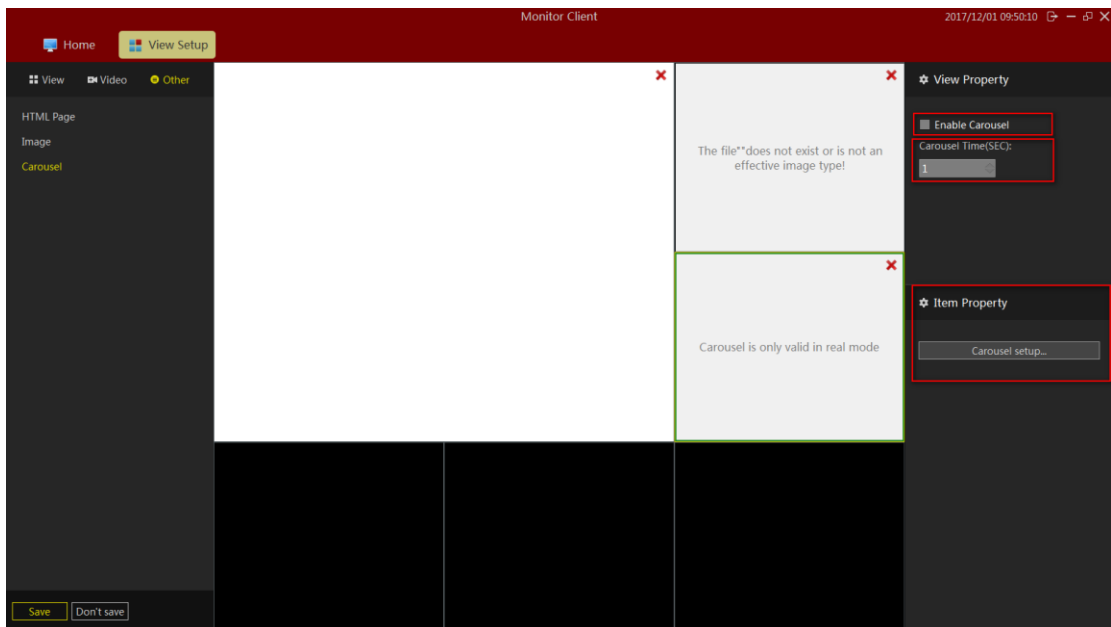
2.1.6.1.4 Delete View

Select the Right View pop-up menu select Delete View.



2.1.6.1.5 Set View polling

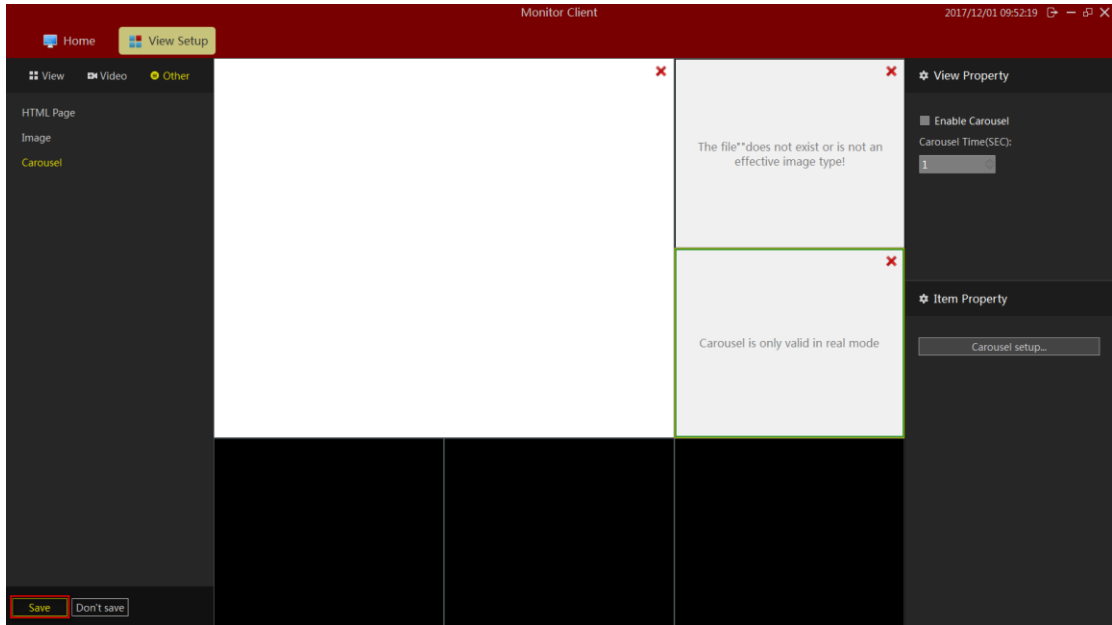
- 1> select the "Turn round robin"
- 2> set the polling interval
- 3> Set the video polling stream



2.1.6.1.6 Save Edit

Rear view of editing you must remember to click Save to take effect.

o

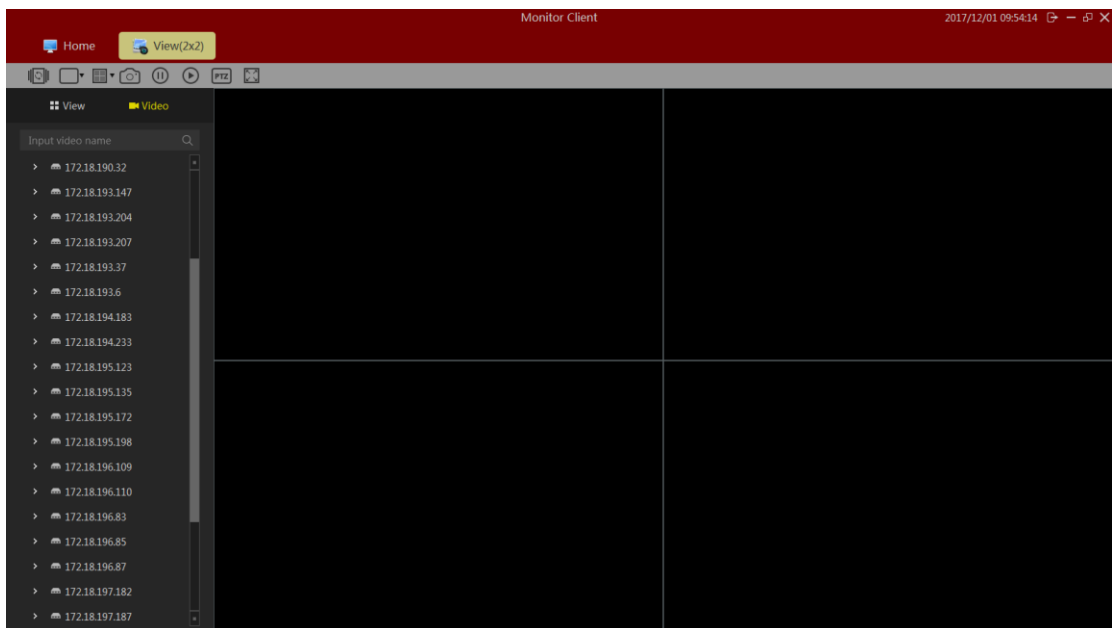


2.2 Operation function and description

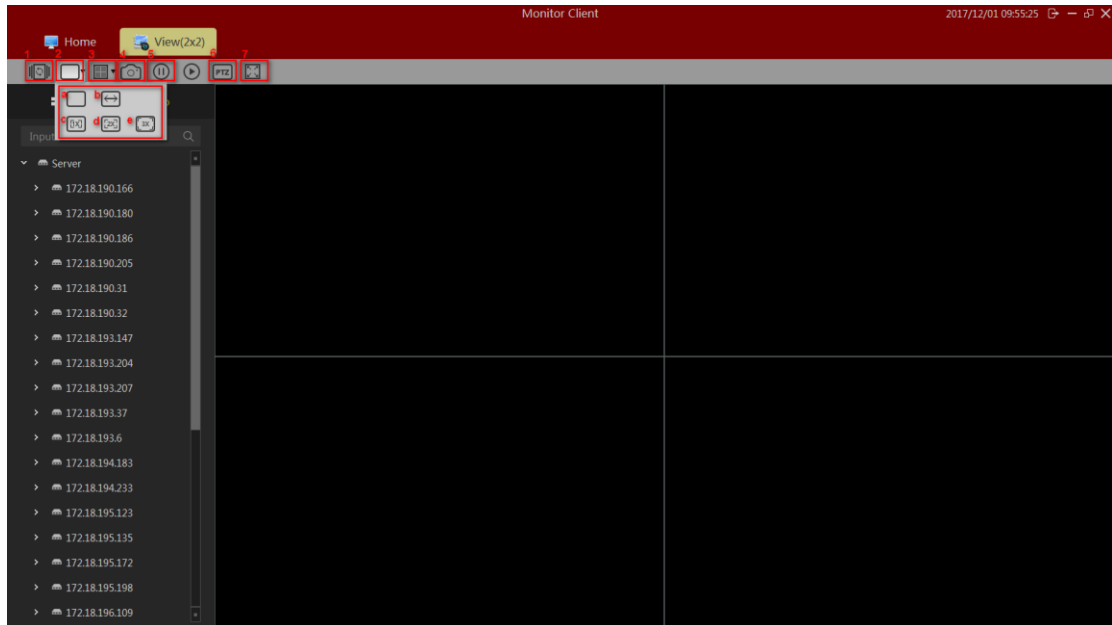
After the VMS Lite configuration is complete, you can use VMS Lite preview, playback, electronic map, and other functions.

2.2.1 Live Preview

Live Preview Interface



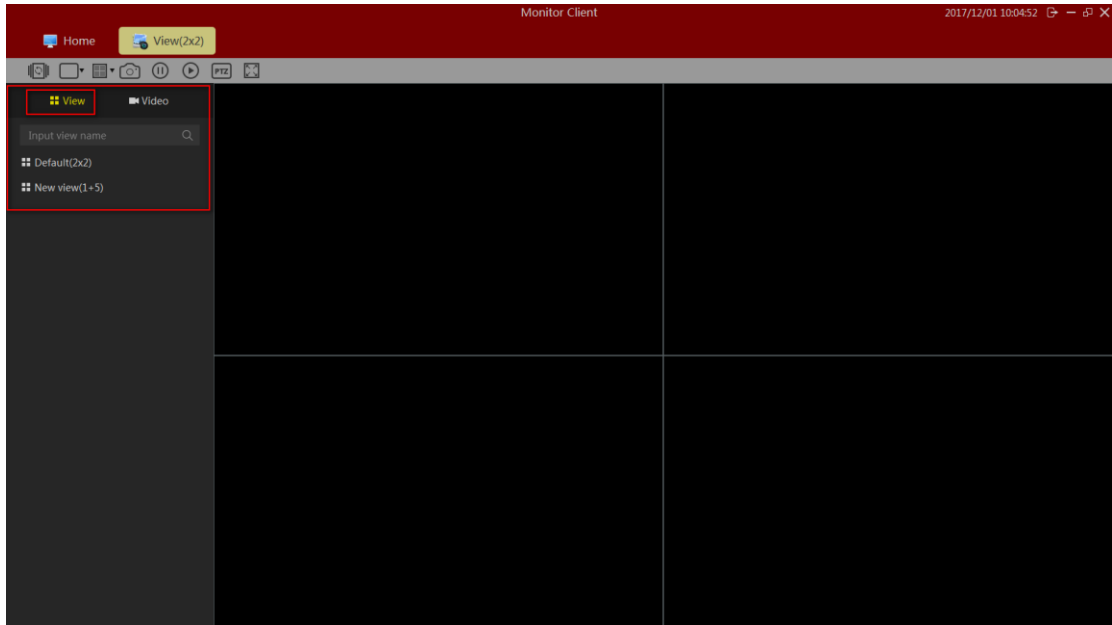
2.2.1.1 Live Preview Features



- 1> View round robin: All round robin round robin set up view
- 2> Image size:
 - a. routine: The image is displayed in real scale.
 - b. Stretch: The image is displayed in the window size.
 - c. 1 times: the image is not scaled.
 - d. 2 times: 2 times image to enlarge.
 - e. 3 times: 3 times image to enlarge.
- 3> View: Select the type of layout view window.
- 4> Snapshot: snapshot picture of the current window.
- 5> Close the current camera video.
- 6> PTZ control (only enabled devices that support PTZ control is effective).
- 7> Full Screen: Full-screen view

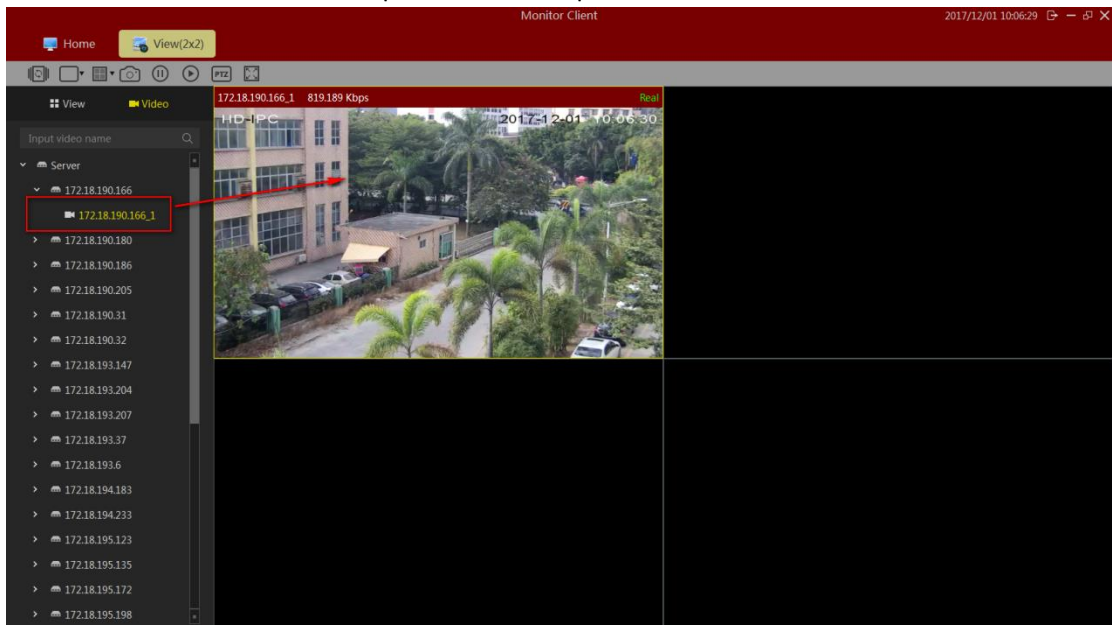
2.2.1.2 View switching video

User set a good view layouts to quickly switch view preview video.



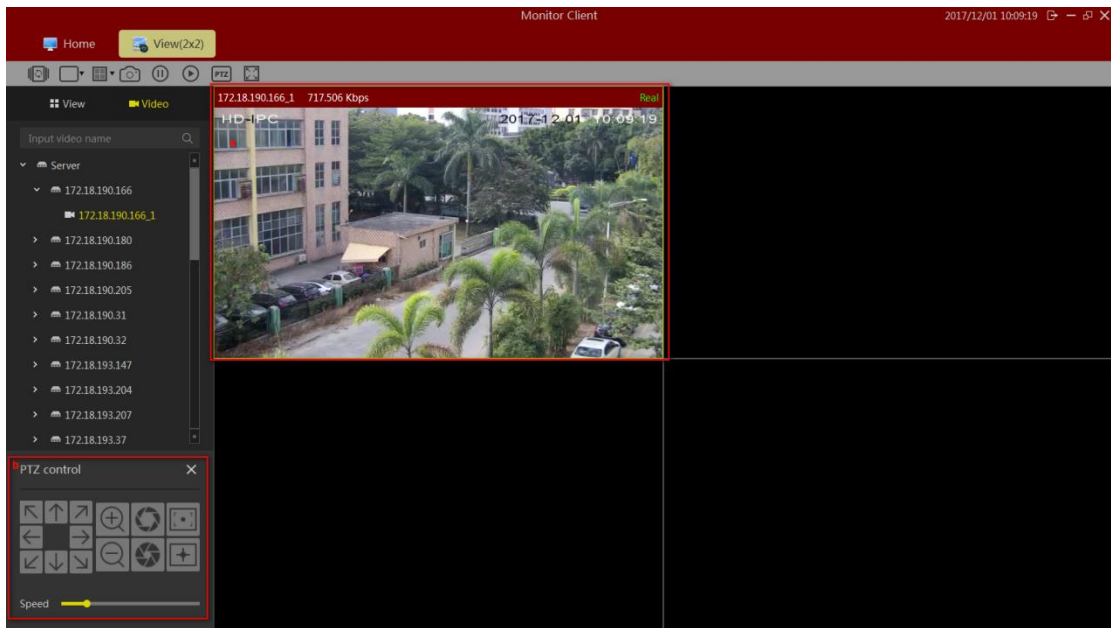
2.2.1.3 Select a camera preview video

Select the camera onto the specified window preview video.

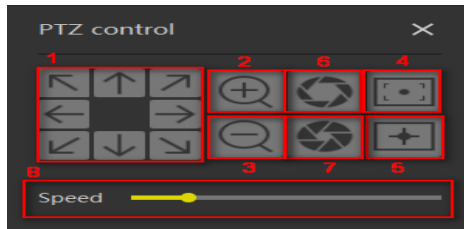


2.2.1.4 PTZ control

- a. Select the required PTZ control window.
- b. In the PTZ console window for the selected PTZ control.



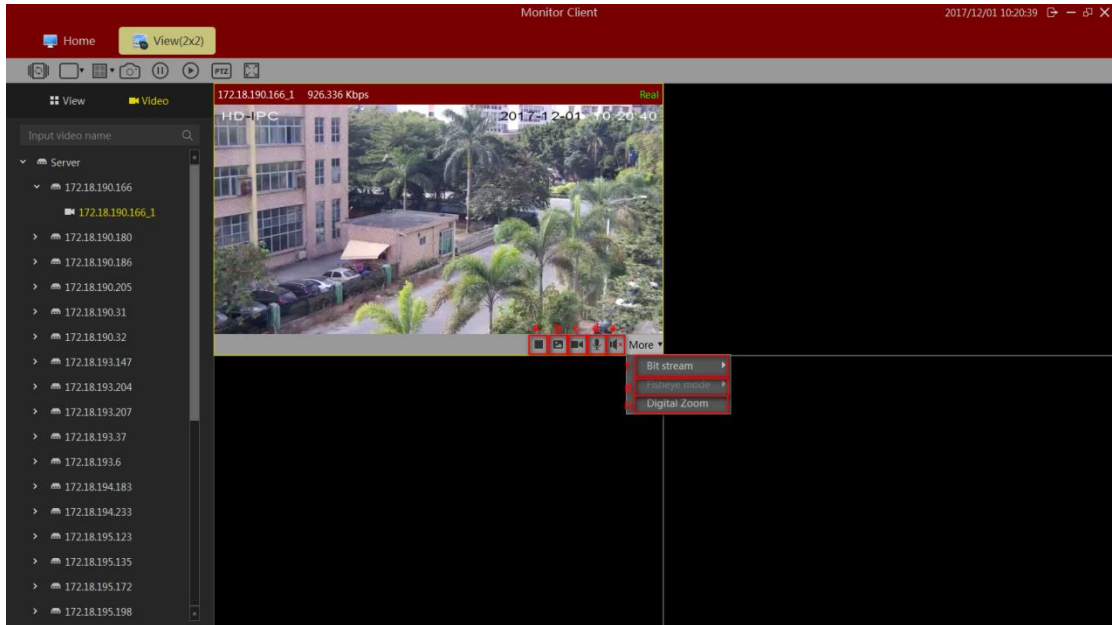
Need equipment to support cloud control。



- 1> Direction control, support rotation in 8 directions
- 2> Zoom function
- 3> Narrow function
- 4> Much focus
- 5> proximity focus
- 6> Aperture closed
- 7> Aperture open
- 8> The cloud turns the speed

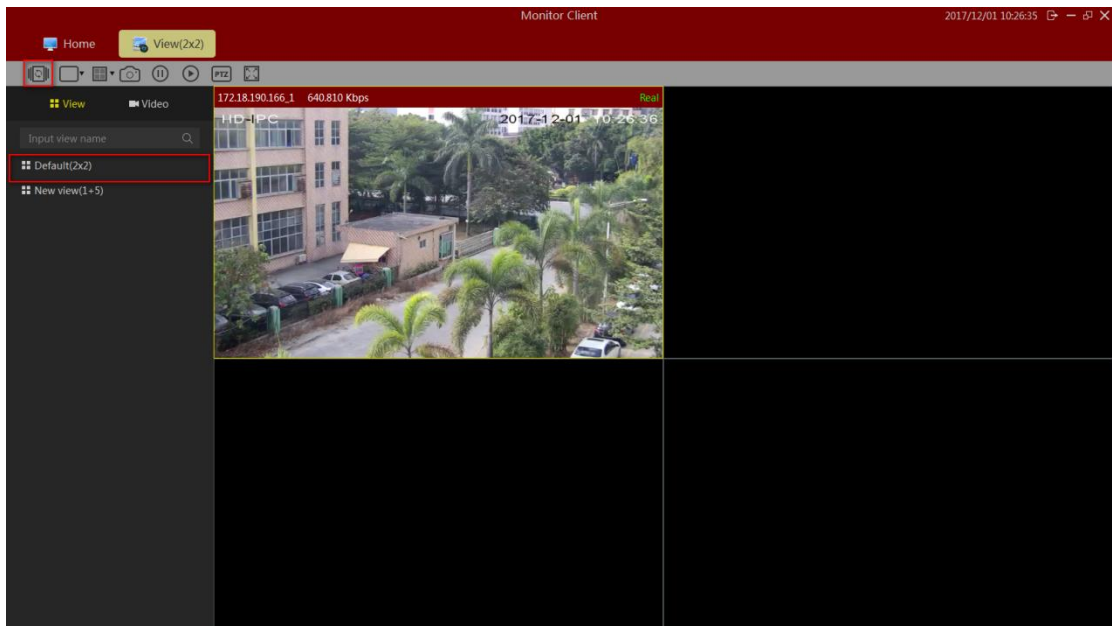
2.2.1.5 Video Window Toolbar Function

- a. stop the current window and open video
- b. Image capture
- c. Local Recording
- d. talkback
- e. sound.
- f. Stream Switching
- G. Fish eye
- h. digital zoom



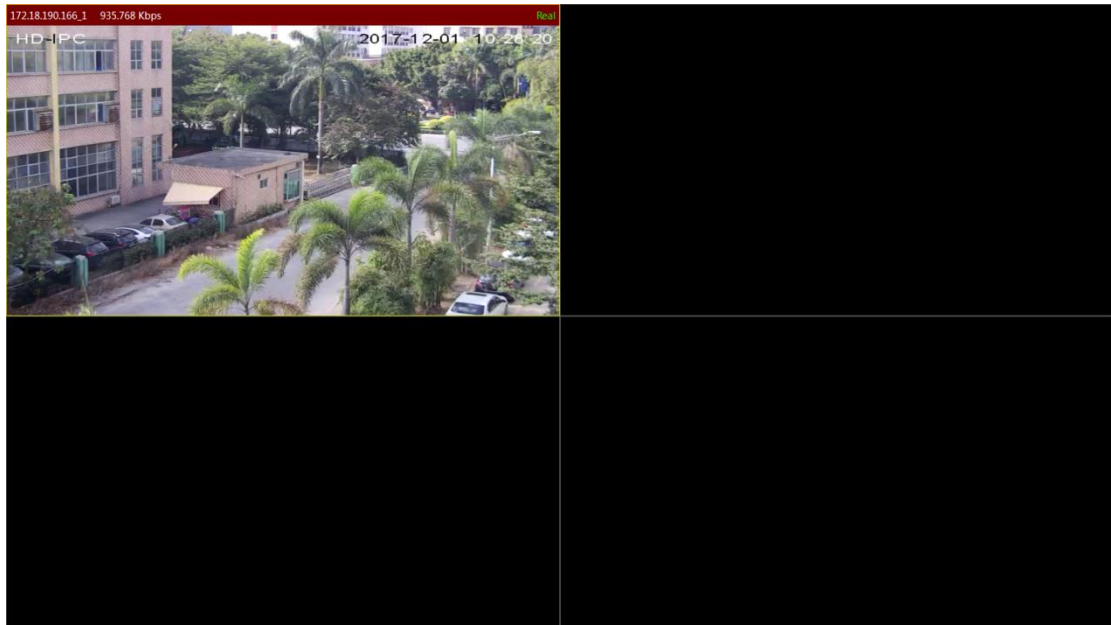
2.2.1.6 View polling

Click the button to open the round robin round robin view, click again to close the round robin.



2.2.1.7 Full Screen

Click to view full-screen to enter full screen mode, right-click on the screen to exit full-screen button to exit full-screen mode.



2.2.2 Playback

Playback is divided into platform video playback and video playback devices.

Under VMS platform playback only in case of server configuration can have playback device playback only in the case of video equipment to playback.

2.2.2.1 Playback Interface Features



1> image size

- a. routine: The image is displayed in the actual proportion
- b. Stretch: The image is displayed in the window size
- c. 1 times: the image is not scaled

- d. 2 times: 2 times image to enlarge
- e. 3 times: 3 times image to enlarge
- 2> Snapshot: Save the currently selected video playback window
- 3> Export
 - a. playback platform to export the currently selected playback video window, select the time period
 - b. equipment playback in the export file selected in the list of video files
- 4> Device: Enter the playback interface device
- 5>Full screen: view into full screen mode

2.2.2.2 platform video playback

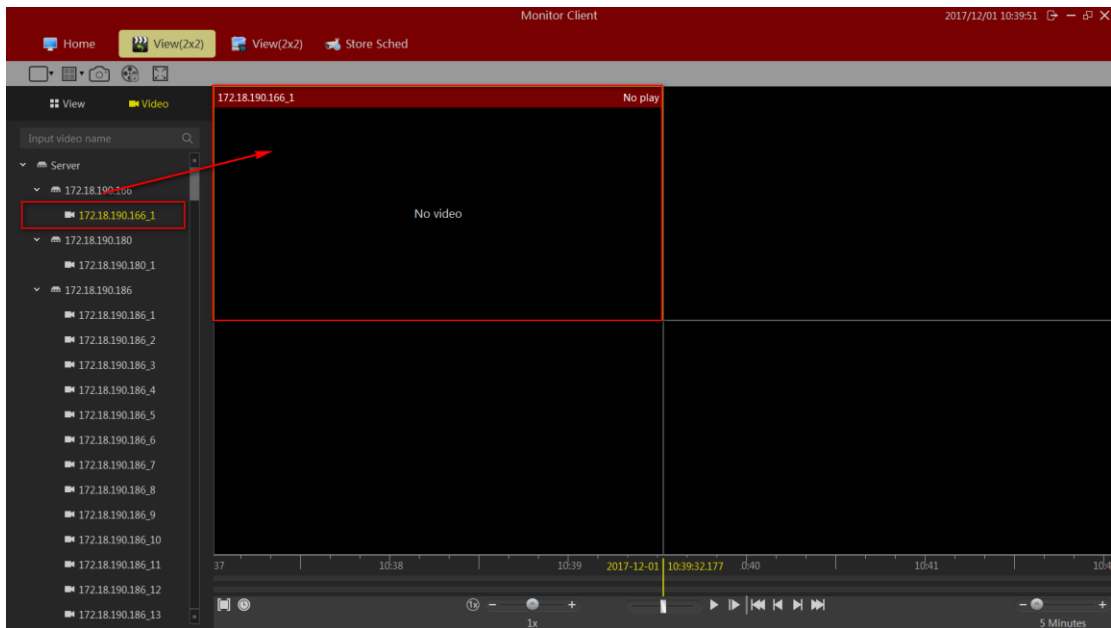
2.2.2.2.1 switch views video playback

View user edited video playback fast switching.



2.2.2.2.2 The limiting choose camera video playback

Select the desired camera onto the specified window.

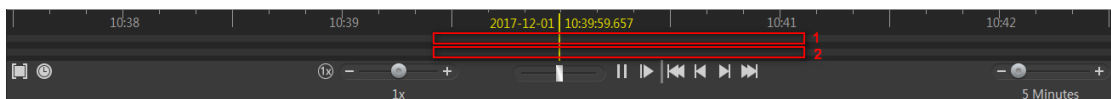


2.2.2.2.3 Video Search

Enter playback interface or playback interface switching view, the view will automatically search out all the time in the video window, and displayed on a timeline.

Timeline of type:

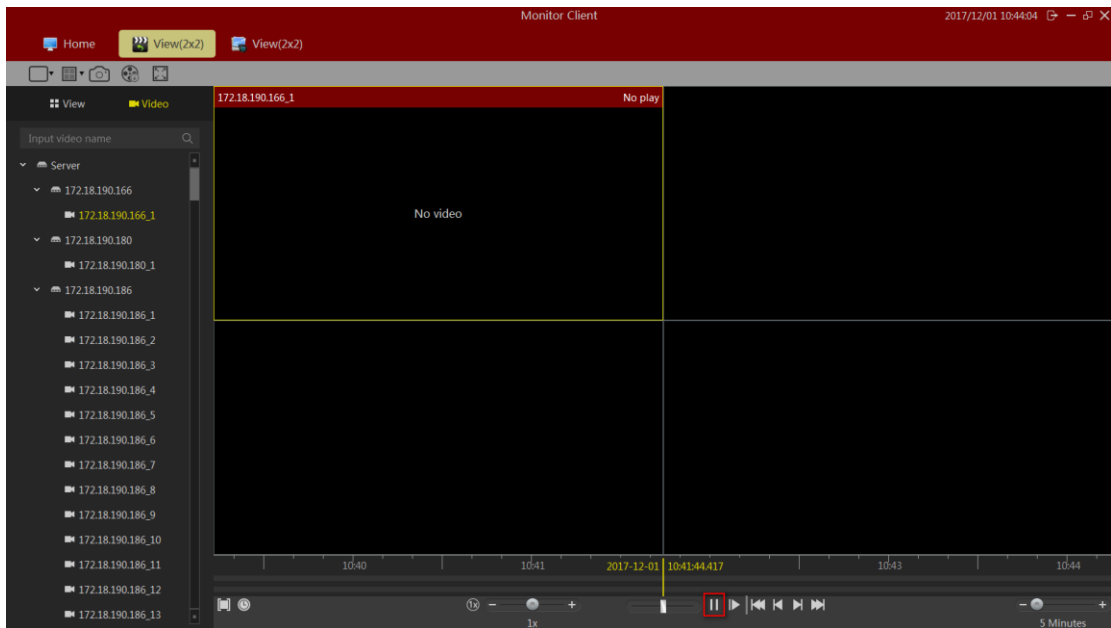
- 1> in the timeline shows the currently selected window video timeline.
- 2> In the following timeline shows the current view all the video cameras and the timeline set.



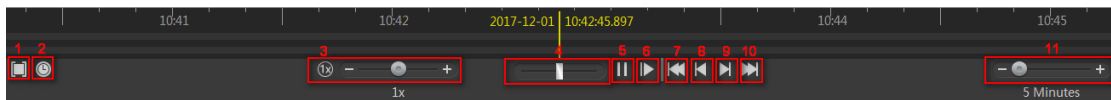
2.2.2.2.4 video playback

2.2.2.2.4.1 synchronous playback

Click the play button to start video playback, the playback mode to view simultaneous playback, the view in the window will play back video at the same time.



Synchronous playback function Toolbar description:



1> Playback area: You can select the playback range, in this range loop playback.

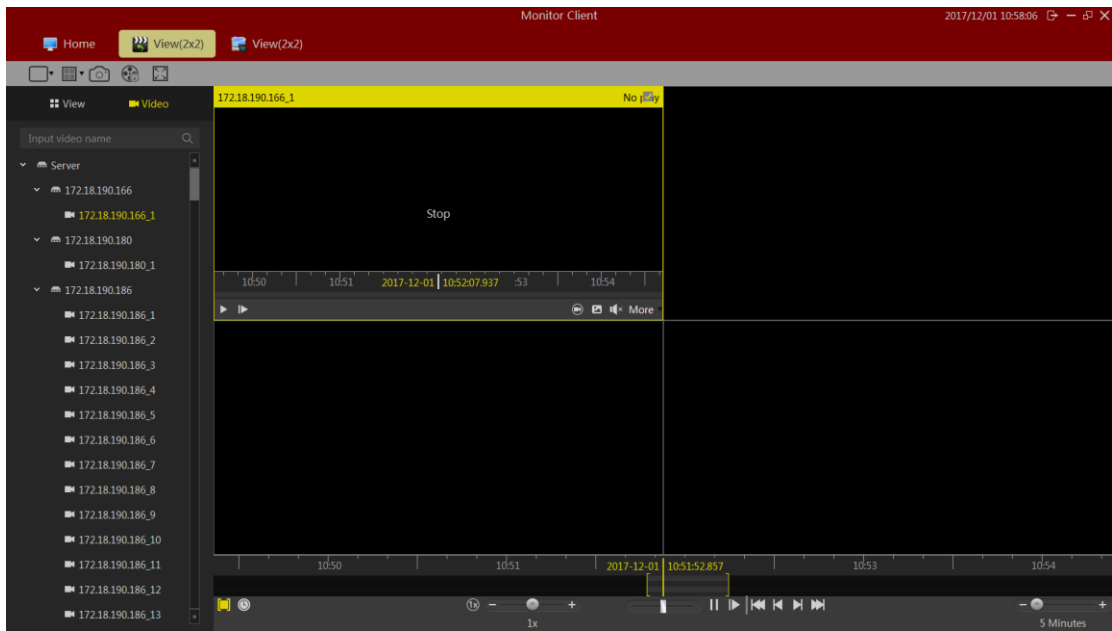


- 2> 1 multiple playback: fast switching to a multiple of the playback.
- 3> Playback multiple adjustments.
- 4> Quick search video.
- 5> Start / pause playback.
- 6> single-frame playback.
- 7> The current window of the first video segment.
- 8> The current window of ten Previous video segment.
- 9> The current window of the next video segment
- 10> The current window of the finally video segment
- 11> The timeline display range.

2.2.2.2.4.2 independent playback

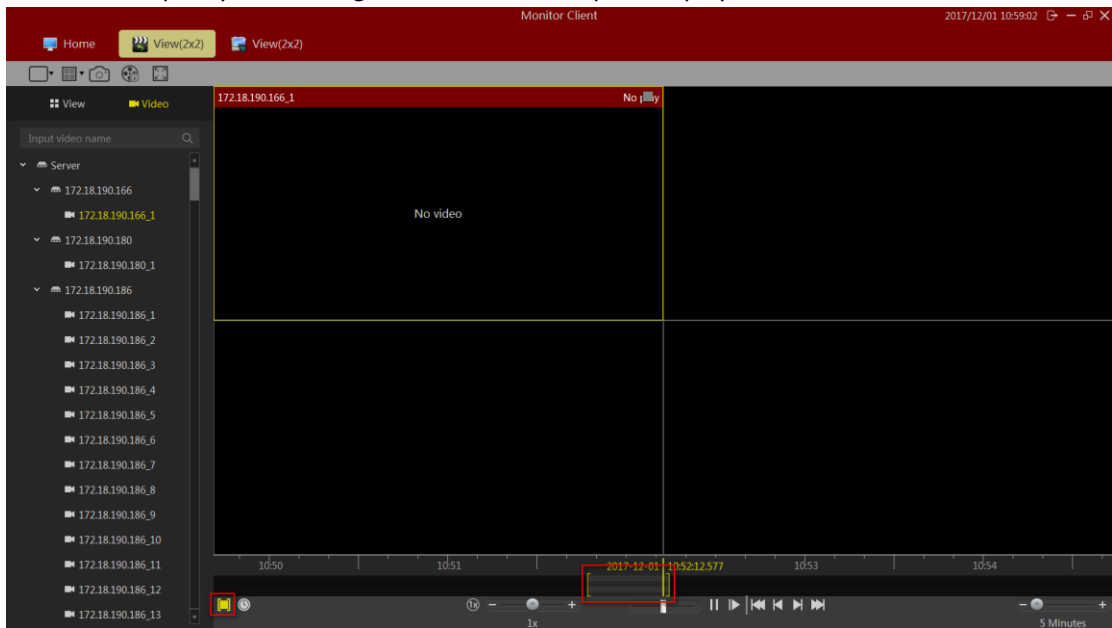
12> If you only need a video playback window, you can use a separate playback. Independent playback video window will not be synchronized playback control toolbar. Independent playback window in the simple playback control bar.

13> Independent playback window in the window toolbar, click the independent playback button to playback individually.



2.2.2.2.4.3 loop playback

You can specify a time range for continuous loop video playback.

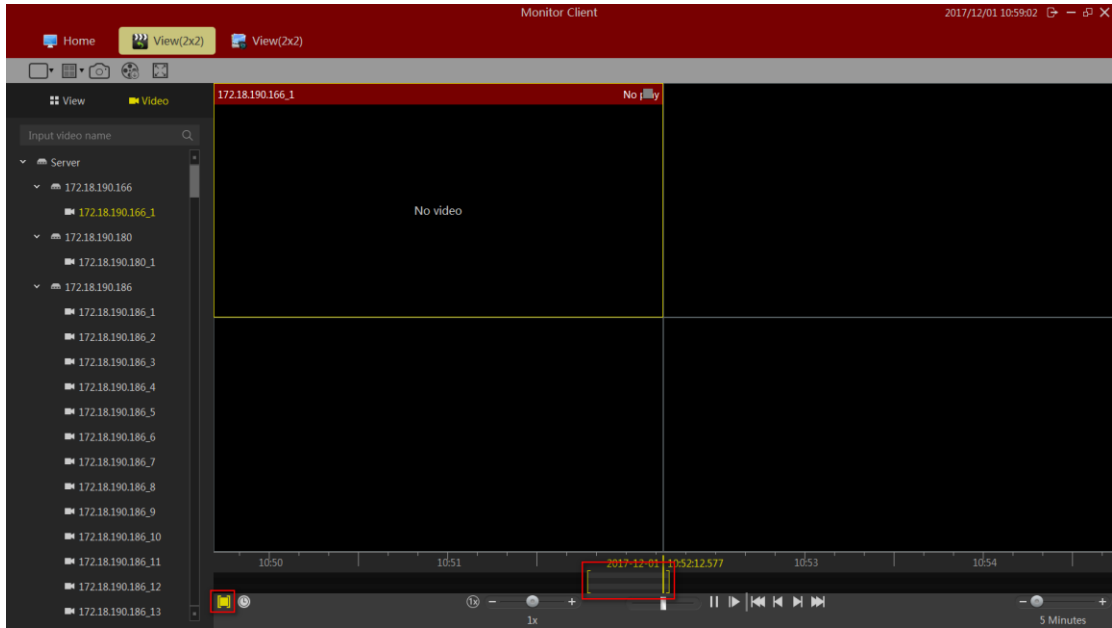


2.2.2.3 Export Video Platform

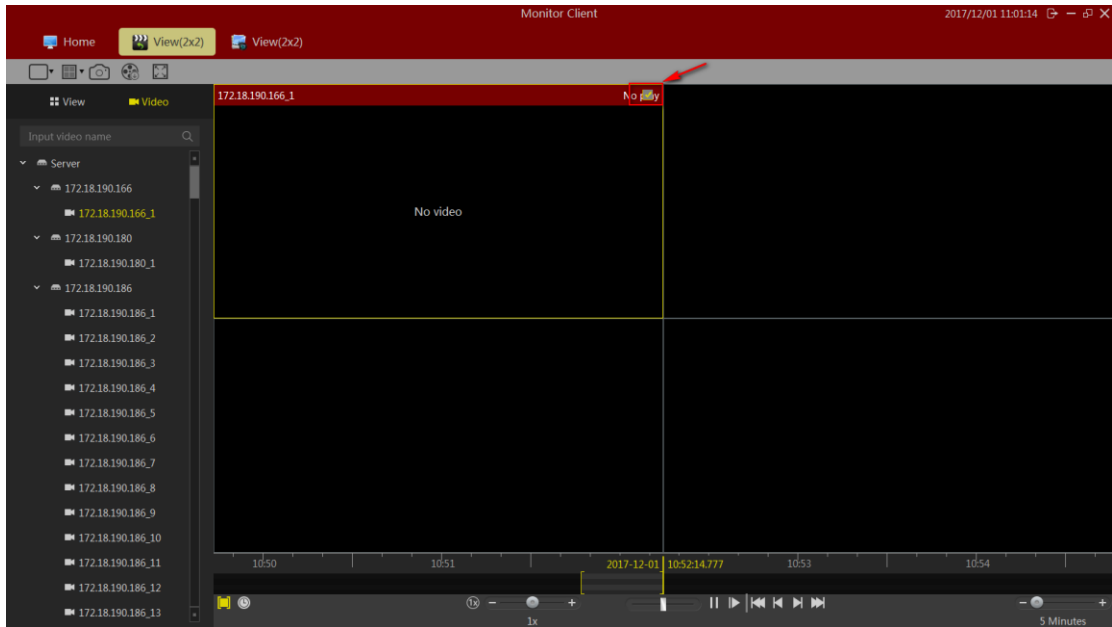
You can export the video server in the client on demand. You can export the view in the window of a video recording, video can also be exported in view of all of the video window.

Video exported for use:

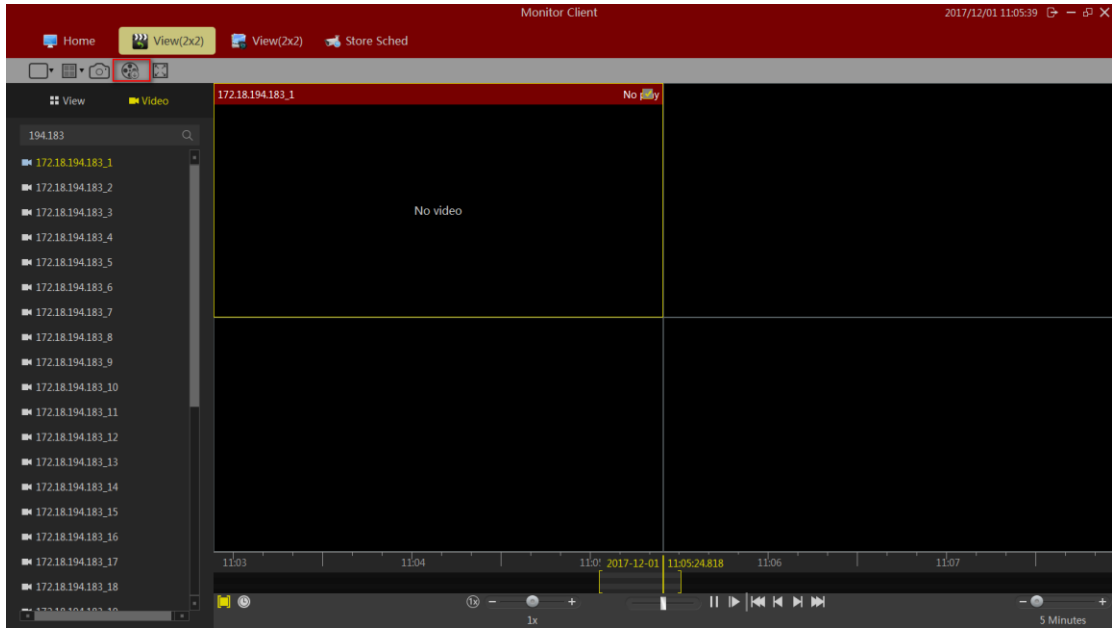
- 1> Select the time range you want to export.



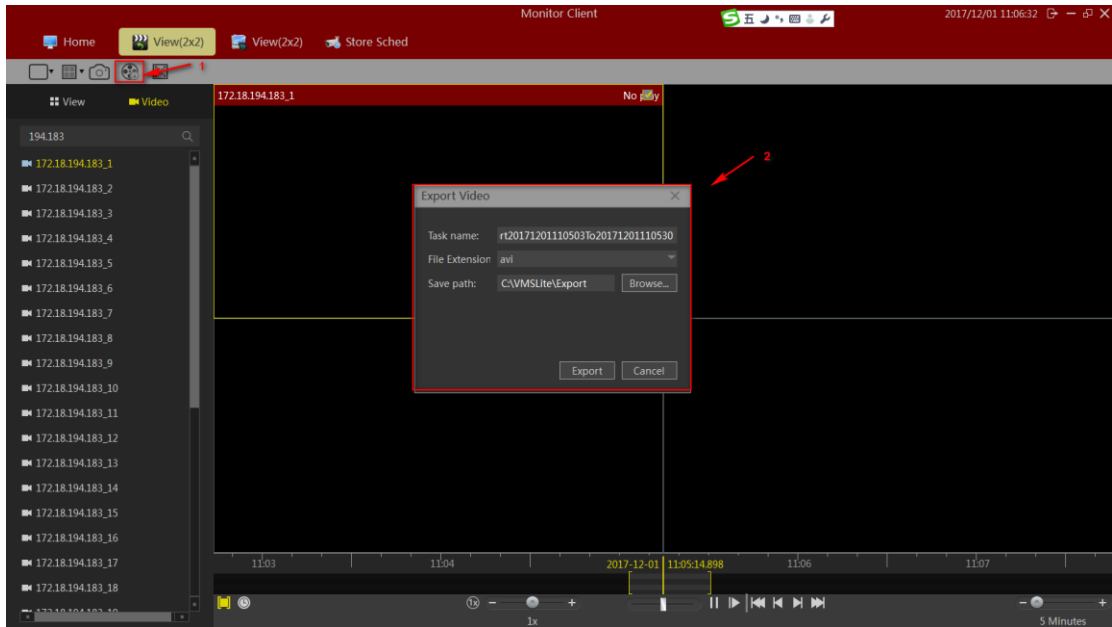
2> Select to export video window.



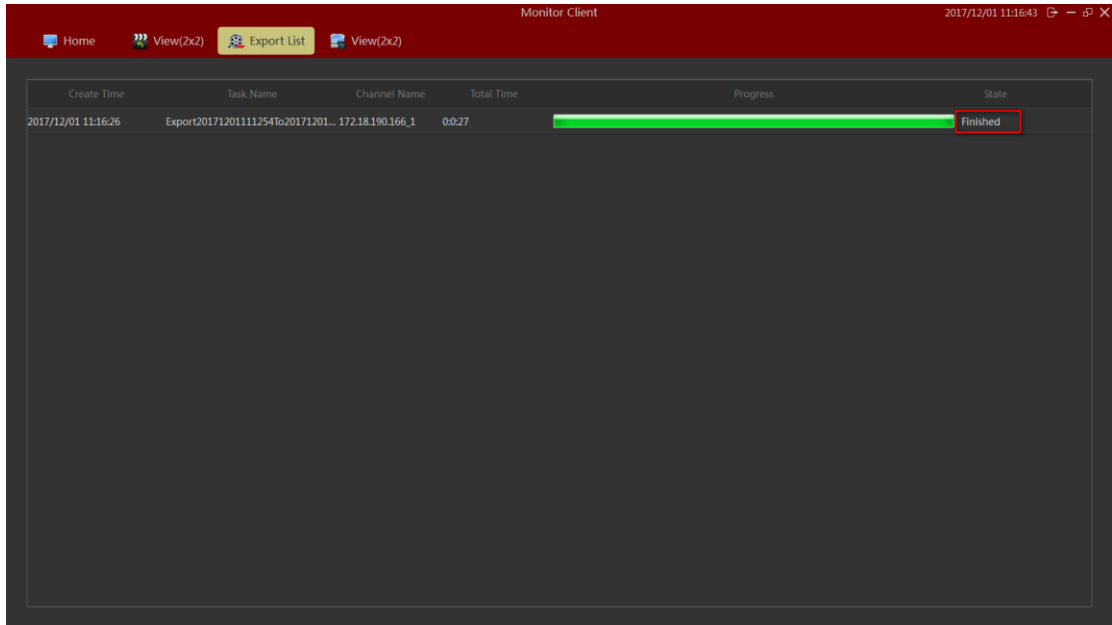
3> Click the Export button.



4> Select the name and location of the exported



5>After the export is completed in management functions in the export list to view details



Click the finish button to quickly jump to the export video specific location.

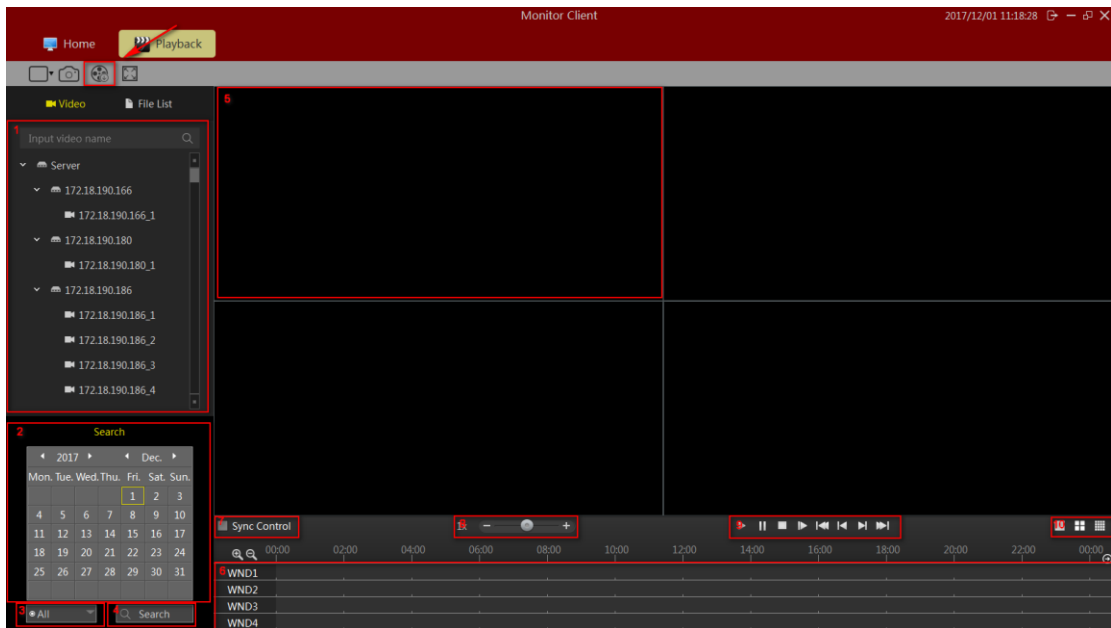
- 1) Click "finish" and the button becomes "details".
- 2) Click "details" to pop up the "details" prompt.



- 3) Click on the green content below "detailed" to locate the video location quickly.

2.2.2.4 Device Playback

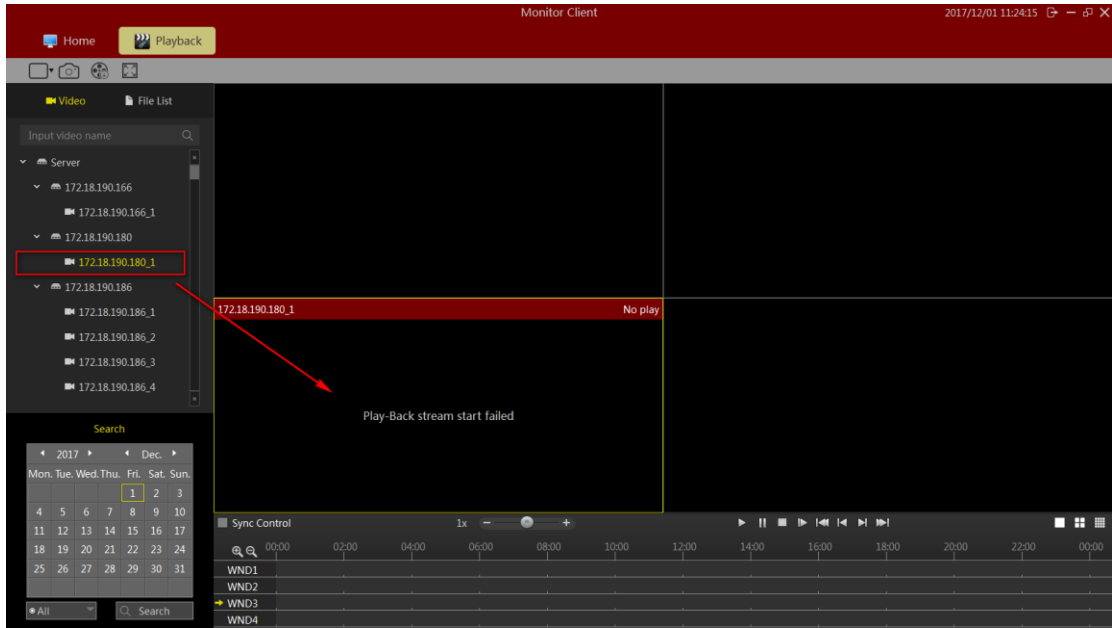
Click the red arrow to mark "find device" to enter the device video playback interface.



- 1> Select the channel to be played back in the device list and drag the playback window (5)
- 2> select the date to be played back
- 3> Select recording type
- 4> Video Search
- 5> Playback Window
- 6> Recording Schedule
- 7> Select synchronous control video playback
- 8> Video Playback speed control
- 9> Recording Playback Controls
- 10> View Control

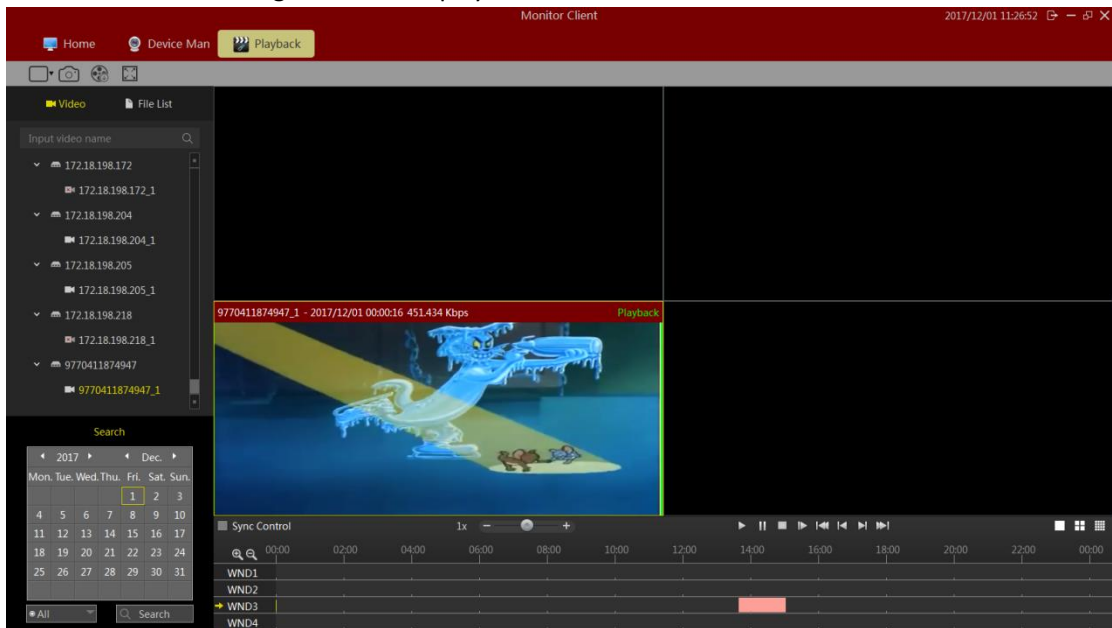
2.2.2.4.1 Select playback video camera

Select playback video camera



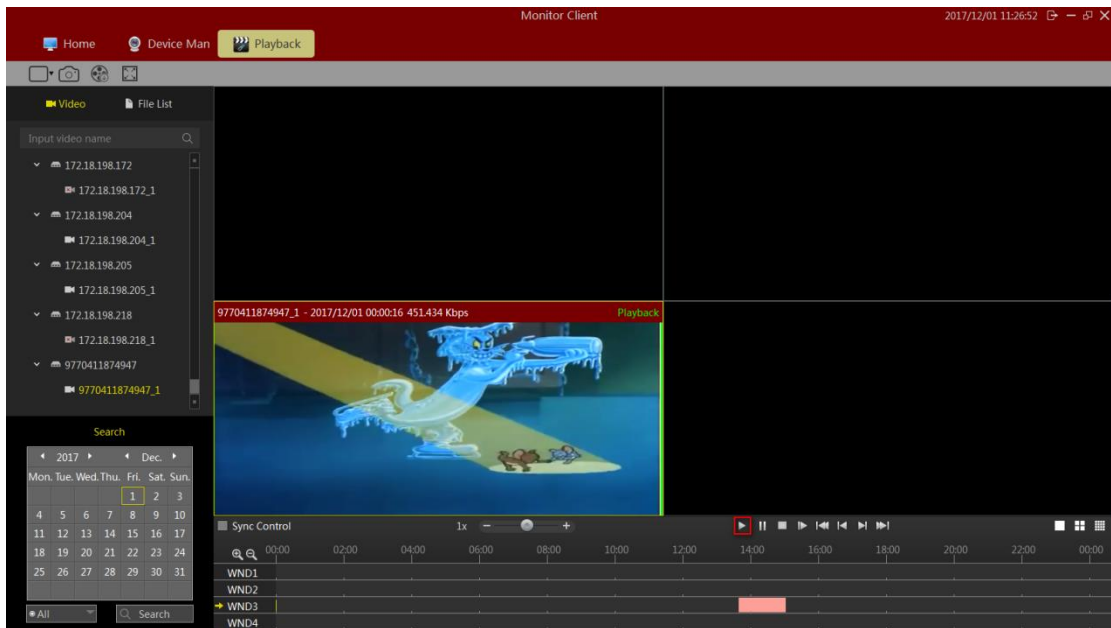
2.2.2.4.2 Video Search

After dragging the camera view automatically search out all the windows in the view to set the date of the recording time, and displayed on a timeline.

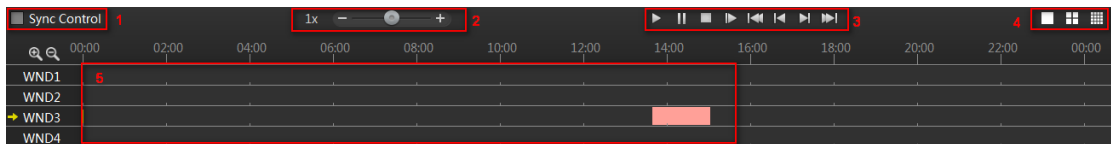


2.2.2.4.3 video playback

Click the play button to start video playback of the currently selected window.

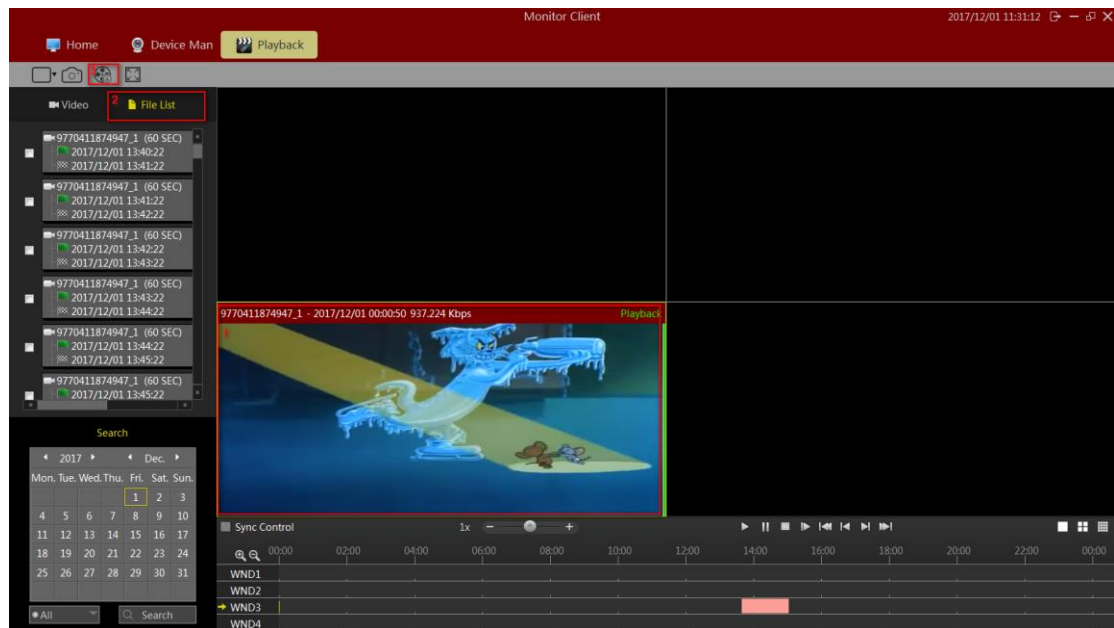


Function Playback Toolbar description:



- 1> synchronization control: When selected, the playback control is valid for all windows
- 2> Playback Speed: Adjust the playback speed of video
- 3> playback control: playback of video control start, pause, stop, single frame playback, video playback of the first segment, a video playback section, a video playback section, a video playback of the last paragraph
- 4> View options: choice of single window view, 4, and 16 window view window view
- 5> Timeline: Displays recording time
 - 6> Adjust Timeline Display: 16-window view, click scrollable window display other time

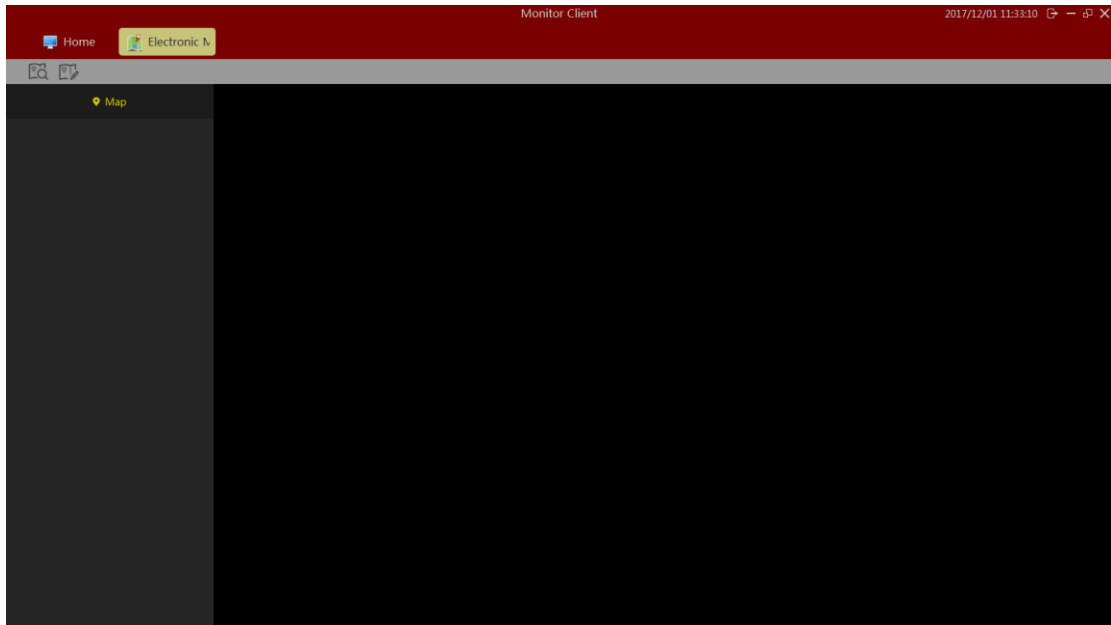
2.2.2.5 Export recording equipment




- 1> Click "File List" arrow
- 2> Select Export Video window
- 3> Select the video file you want to export
- 4> Click Export

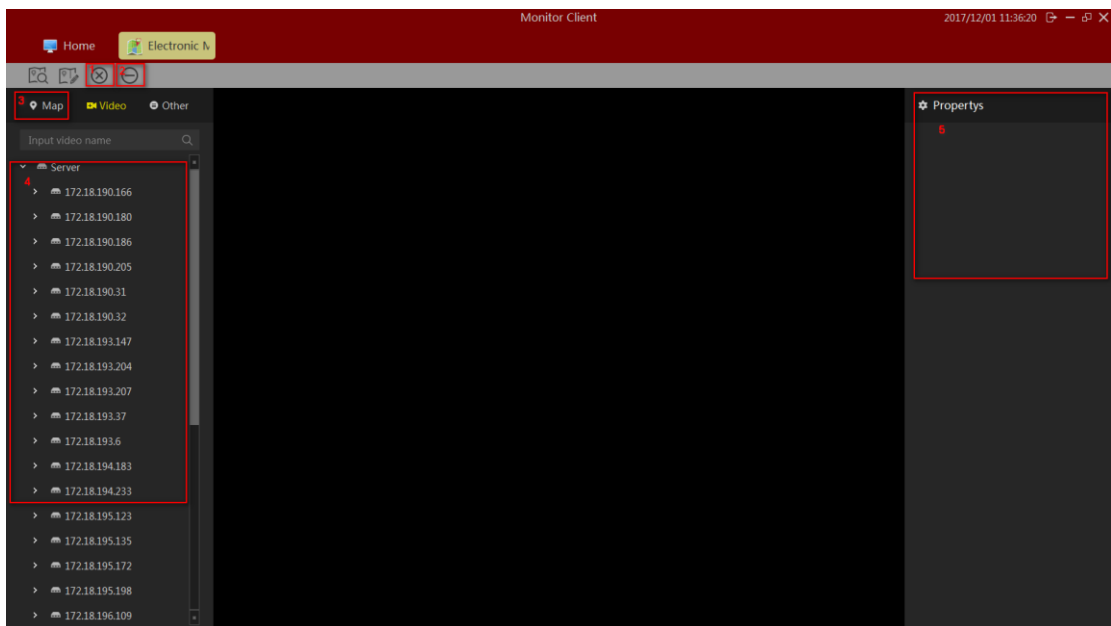
2.2.3 Electronic Map

Select "Map" in the main interface to enter the electronic map related interface.



2.2.3.1 Editing Electronic map

Clicked  ,Enter the map interface.




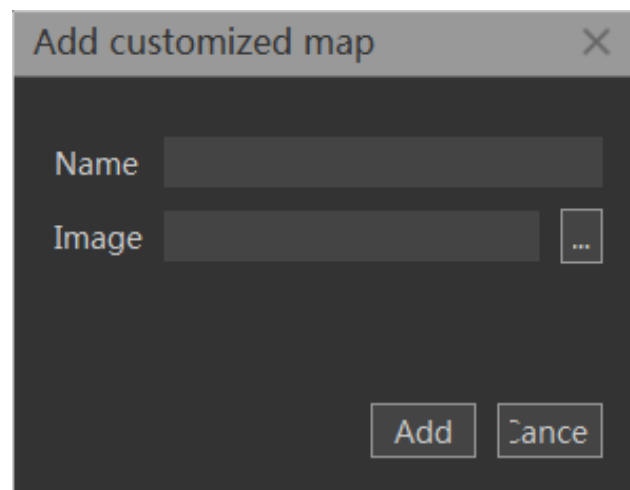
Map editing interface function introduction:

- 1> Delete electronic map

- 2> Delete the element nodes on the electronic map
- 3> Add elements, including cameras and other items (request)
- 4> The attributes of a map or element

2.2.3.1.1 Edit Electronic map

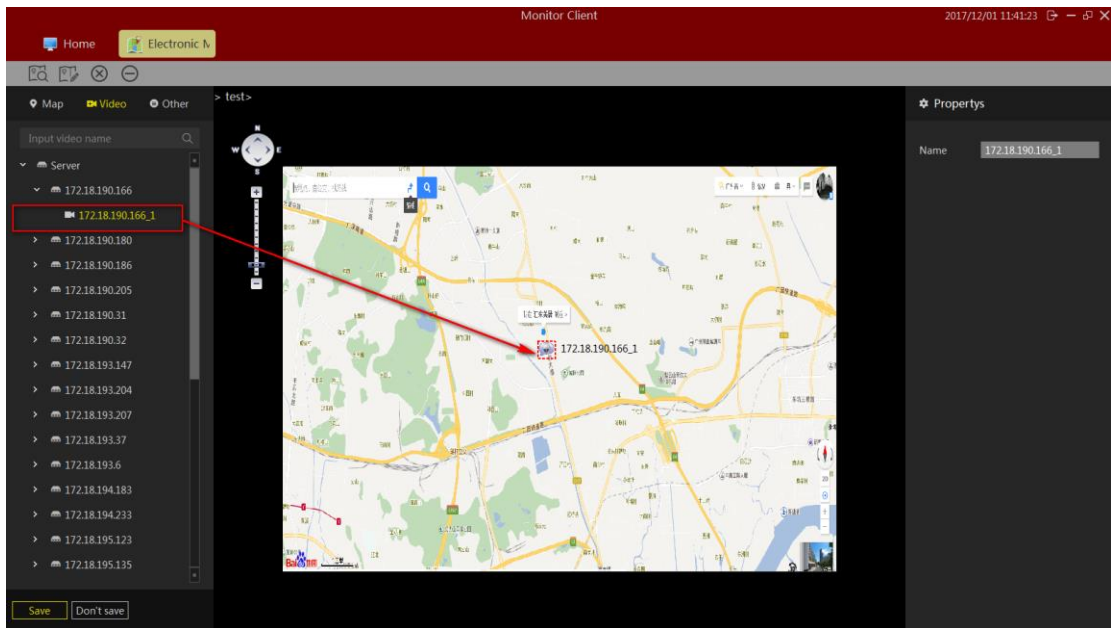
Clicked  select customized map, When selecting customized map, the new custom map will pop up the "add custom map" dialog box, fill in the name and select the source of the image, and click "ok" to complete the addition of the custom map.




After adding the success, the remaining operations are equivalent to adding gis maps, followed by a gis map as an example.

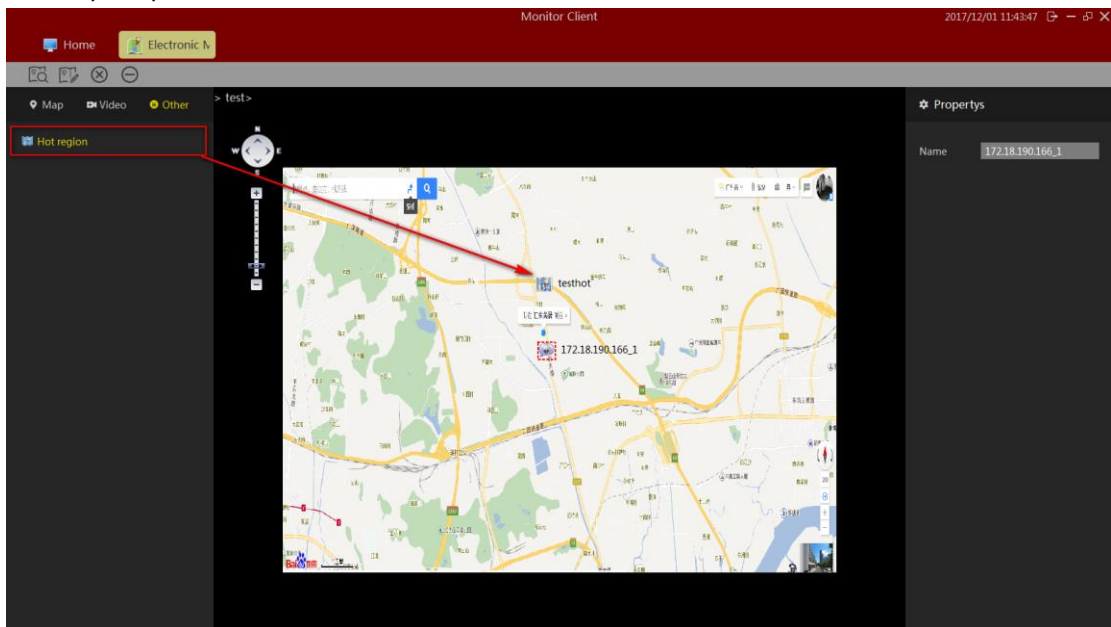
2.2.3.1.2 Add camera elements

Click add element [camera] to drag the required camera to the location of the map. Click save as you add. Map size can be achieved by sliding mouse.



2.2.3.1.3 Add other elements


Clicked [Additional Items] to  drop to the map, Then click save as prompted.

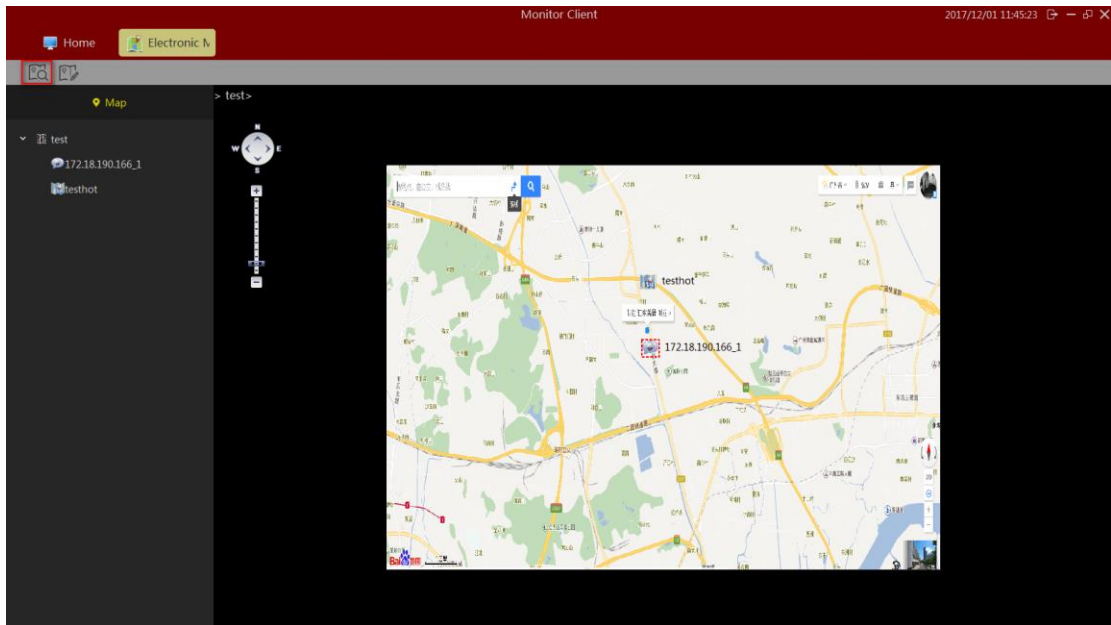


Notice:

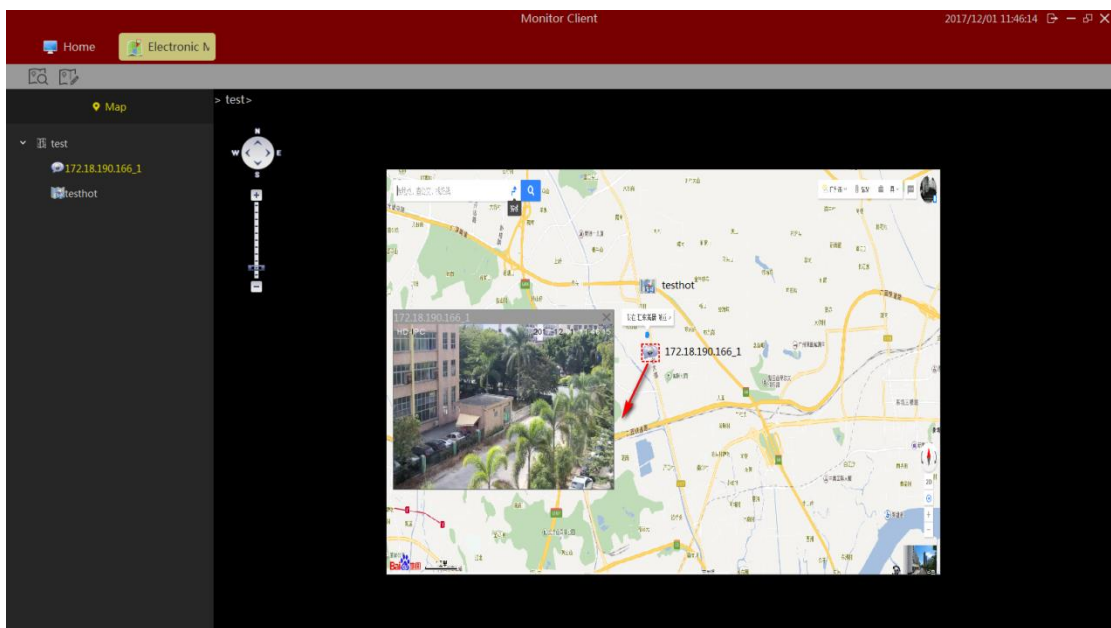
When other elements need to be modified, you can modify them directly on the map.

2.2.3.2 Preview Electronic map

Clicked , Switch to the electronic map preview interface.

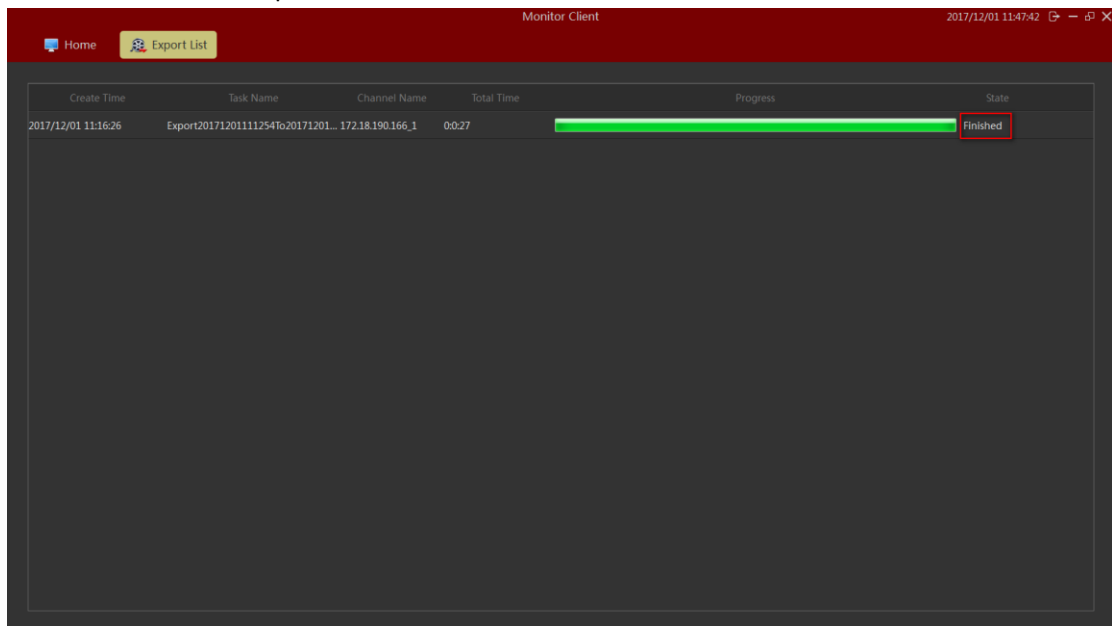


The double - click element displays the real-time monitoring image of the associated monitoring point.

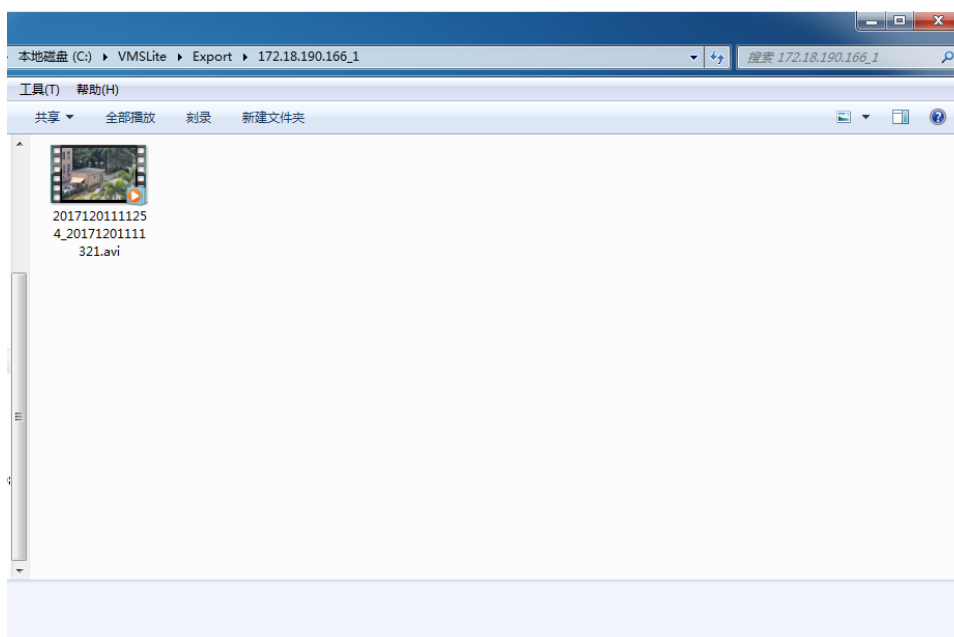
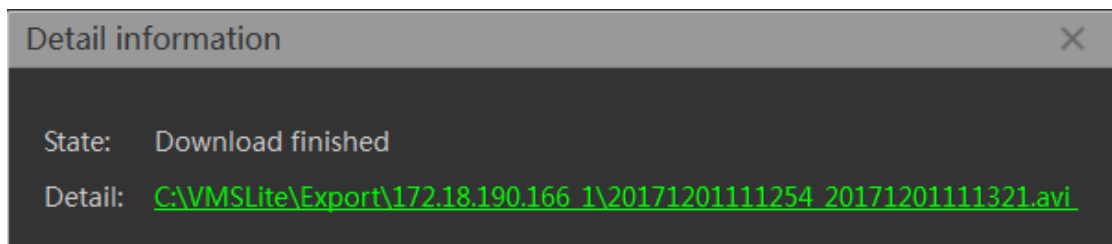


2.2.4 Export List

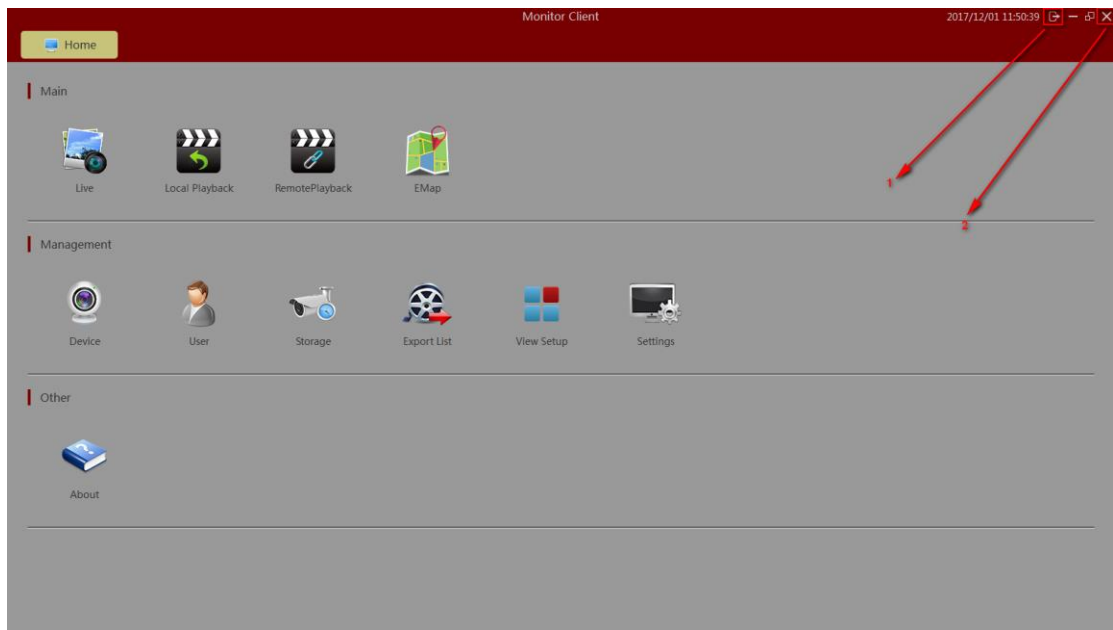
See video of the export list information.



Click "finish" to become "detailed information". Click on the corresponding location of video file in the list, and click the video path to quickly jump to this location.



3 Logout



- 1> Quit System
- 2> Log out of the system